

May 16, 2019

PROJECT DESCRIPTION

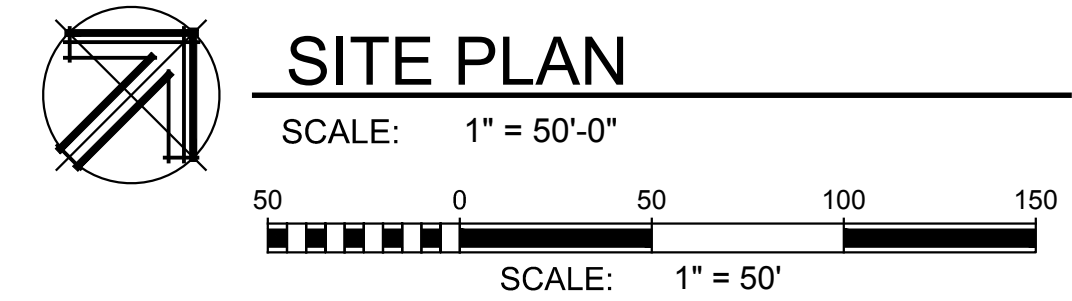
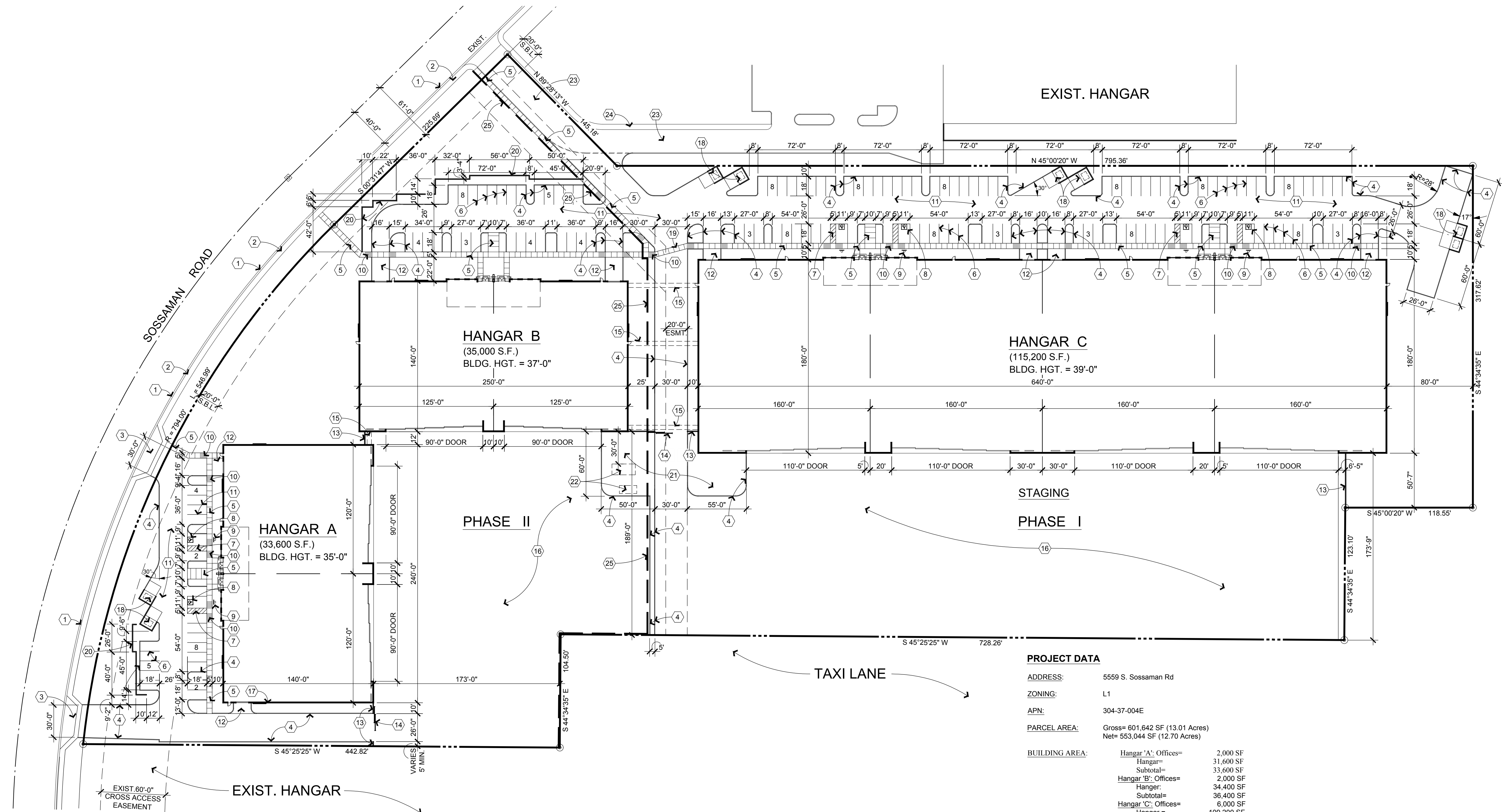
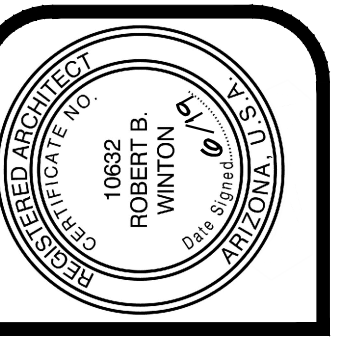
Our Client is proposing to develop three different size hangars on vacant parcels within the Phoenix-Mesa Gateway Airport. They will all be tied together physically as one building. The general plan character area designation is specialty because of the airport. The hangars will be consistent with the general plan.

The site is also within the Airport Campus District of the Phoenix-Mesa Gateway Strategic Development Plan and the proposed development complies with the plan.

All three hangars will be adjacent to the taxi lane with easy access to the runway. The building of the three hangars will be in two phases.

Hangar 'C' will be Phase I and hangars 'A' and 'B' will be Phase II construction. Each will have vehicular parking on the front side of the hangars and overhead doors to access the hangar. All three of the hangars are speculative offices for use by each prospective tenant. In the future there will be capability on site for common use fuel tank and pumping station for all tenants. Because of the odd shaped lot, the constraints for ample size hangars and vehicular parking are tight.

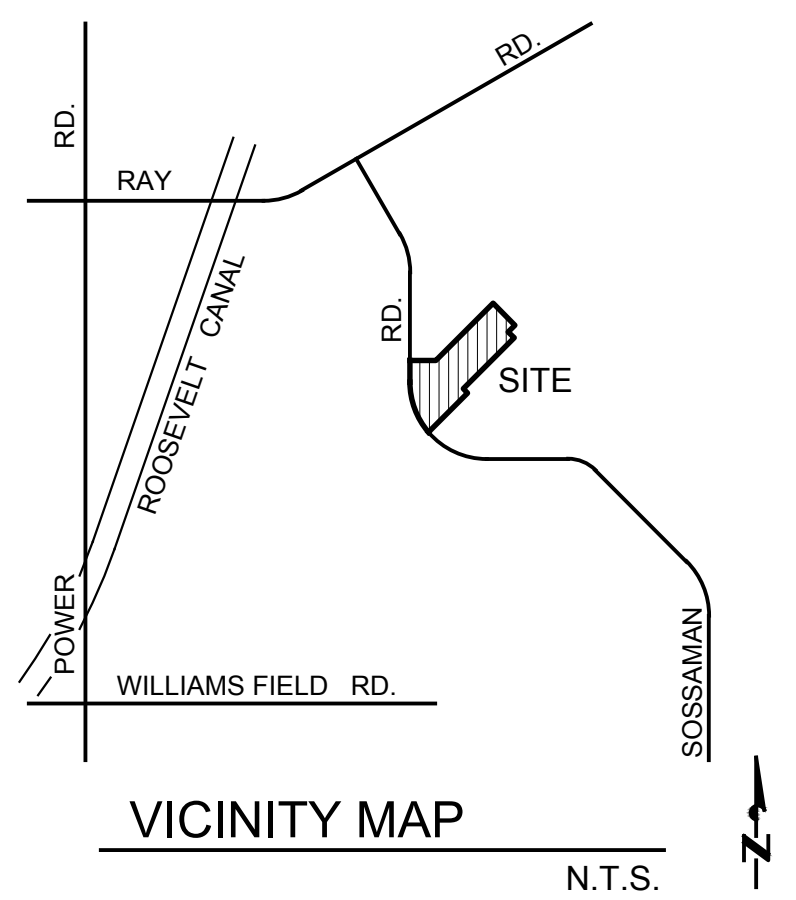
We feel we have made it all compatible with the existing airport condition. The buildings will be a mixture of preengineered metal and masonry. The exterior walls will be parapets to screen any mechanical units on the roof and drainage on the roofs will be internal. The entries for each building will be two story glass, masonry and steel canopy with a sloped vertical element to support the canopy. Accent colors will tie all the buildings together as one, along with horizontal elements between each building. Landscape will be compatible with the theme currently within the airport.



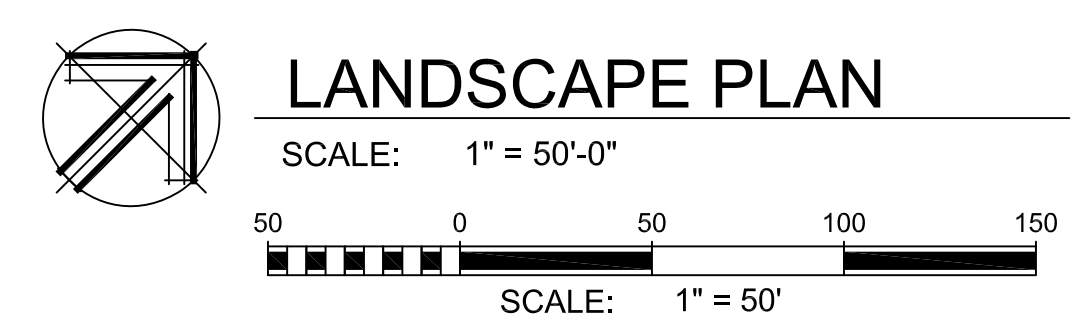
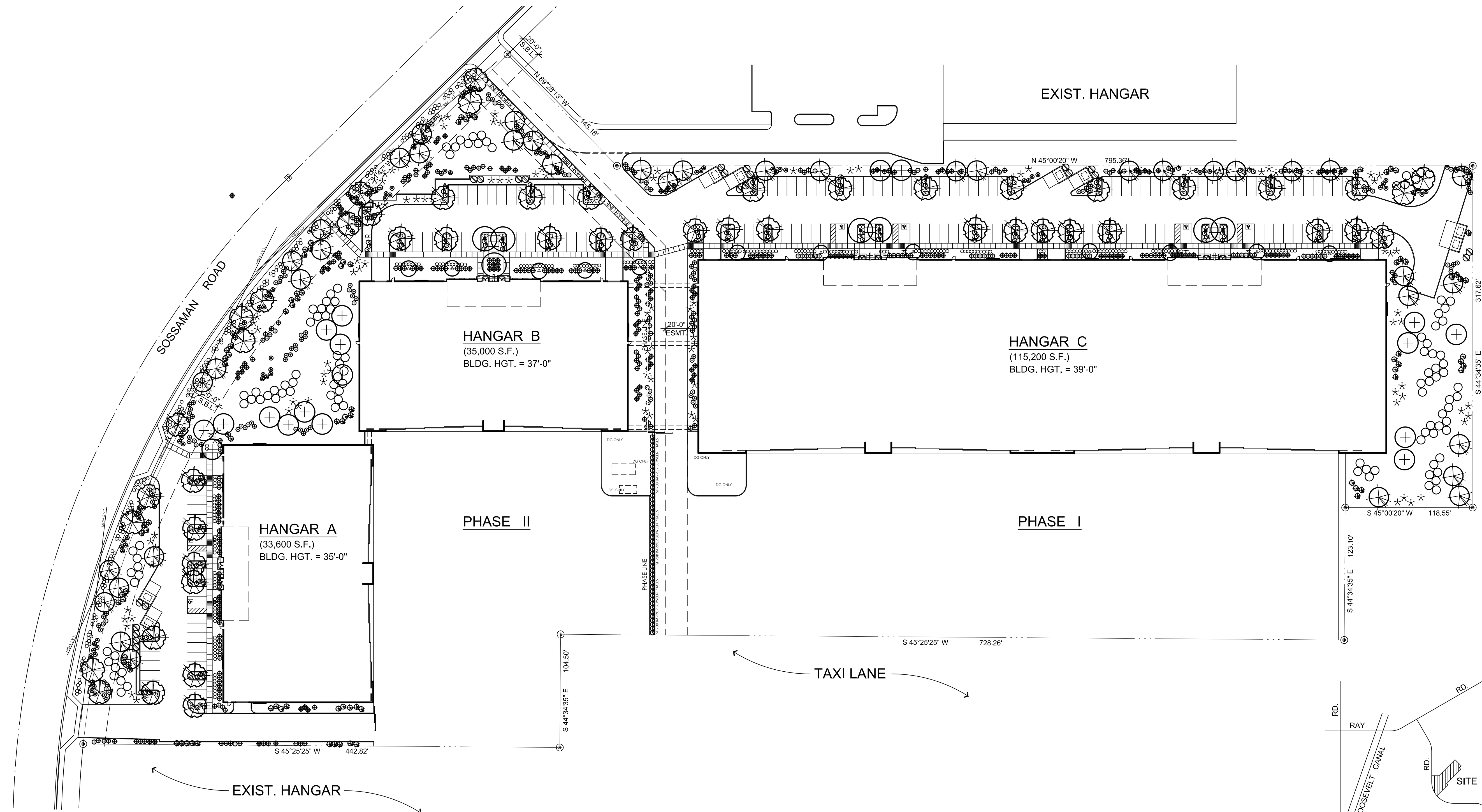
- SITE PLAN KEYNOTES**
- Existing concrete vertical curb and gutter
 - New 4" concrete sidewalk per City of Mesa Standards and Civil drawings
 - New concrete curb cut per City of Mesa Standards and Civil drawings
 - 6" concrete curbing per Civil drawings
 - 4" concrete sidewalk with score joints at 5'-0" oc maximum and expansion joints at 20'-0" maximum
 - 4" white painted parking stripes
 - 4" wide yellow painted diagonal striping and at perimeter
 - Accessible symbol painted on the pavement per detail, Sheet SP-2
 - Accessible signage per detail, Sheet SP-2
 - Ramp up maximum 1:12. Provide score joints per 2010 ADA Standards
 - Asphalt pavement per civil drawings
 - Concrete apron flush with finish floor sloped to pavement
 - 6'-0" high, wrought iron fencing.
 - 30'-0" wide telescoping gates (2-15'-0" sections). Gates to be wrought iron.
 - Steel beam element between buildings to tie them together as "one". Set bottom of element at +15'-0" AFG
 - Concrete staging area per civil and structural drawings
 - Three hour fire rated wall and opening
 - Trash enclosures per details
 - 6" concrete (3,500 psi) flush with pavement
 - 3'-0" high, 8" cmu screen wall per details, Sheet SP-2
 - Decomposed granite
 - Future above grade fuel tank. Provide 6" diameter pipe bollards
 - Existing asphalt drive
 - Existing concrete sidewalk
 - Indicates Phase line. Phase I to be built now, Phase II in the future

PROJECT DATA

ADDRESS:	5559 S. Sossaman Rd
ZONING:	L1
APN:	304-37-004E
PARCEL AREA:	Gross= 601,642 SF (13.01 Acres) Net= 553,044 SF (12.70 Acres)
BUILDING AREA:	Hangar 'A': Offices= 2,000 SF Hangar= 31,600 SF Subtotal= 33,600 SF Hangar 'B': Offices= 2,000 SF Hangar= 34,400 SF Subtotal= 36,400 SF Hangar 'C': Offices= 6,000 SF Hangar= 109,200 SF Subtotal= 115,200 SF Total= 185,200 SF
LOT COVERAGE:	185,200/553,044=33.5% Note: 4 parcels to be combined into one lot)
CONSTRUCTION TYPE:	IIB, AFES
ALLOWABLE AREA:	Unlimited area with 60' yards on all sides, except South side of Hangar A. South building wall to be 3 Hr Fire Rated
OCCUPANCY:	S1- Hangars (Offices are an accessory use)
PARKING REQUIRED:	Building A: Offices=2000/375=5.33 Hangar=31,600/2000=15.80 Total= 21 Spaces Building B: Offices=2000/375=5.33 Hangar= 34,400/2000=17.20 Total= 23 Spaces Building C: Offices=6000/375=16 Hangar=109,200/2000=54.6 Total= 71 Spaces Total= 93 Spaces
PARKING PROVIDED:	Building A: 24 Spaces Building B: 24 Spaces Building C: 93 Spaces Total= 141 Spaces
ACCESSIBLE PARKING REQUIRED:	6 Spaces
ACCESSIBLE PARKING PROVIDED:	6 Spaces
OWNER:	



DRB 19-00362

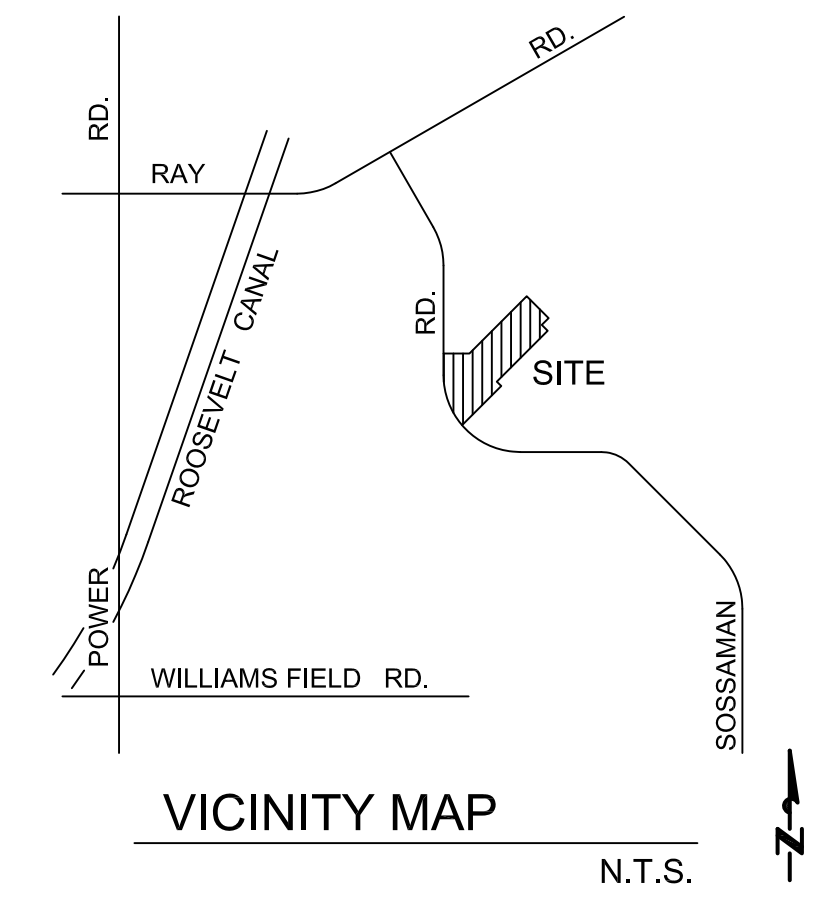


LANDSCAPE PLAN

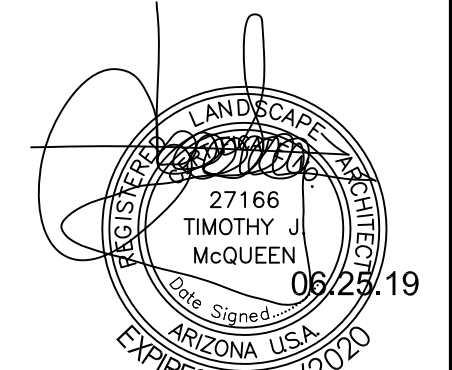
SCALE: 1" = 50'-0"
 SCALE: 1" = 50'

LANDSCAPE LEGEND

- CERCIDIUM 'HYBRID'
DESERT MUSEUM PALO VERDE
24" BOX (50)
- ACACIA SALICINA
WILLOW ACACIA
24" BOX (18)
- PROSOPIS CHILENSIS
CHILEAN MESQUITE (THORNLESS)
24" BOX (40)
- CERCIDIUM 'HYBRID'
DESERT MUSEUM PALO VERDE
36" BOX (16)
- SOPHORA SECUNDFLORA
TEXAS MOUNTAIN LAUREL
24" BOX (12)
- HESPERALOE PARVIFLORA
RED YUCCA
5 GALLON (192)
- DASYLIION WHEELERII
DESERT SPOON
5 GALLON (201)
- AGAVE GEMNIFLORA
TWIN FLOWERED AGAVE
5 GALLON (79)
- MUHLENBERGIA 'REGAL MIST'
REGAL MIST DEER GRASS
5 GALLON (131)
- LEUCOPHYLLUM FRUTESCENS
'GREEN CLOUD'
5 GALLON (103)
- CAESALPINIA MEXICANA
MEXICAN BIRD OF PARADISE
5 GALLON (111)
- RUELLIA PENINSULARIS
BAJA RUELLIA
5 GALLON (178)
- TECOMA 'ORANGE JUBILEE'
'ORANGE JUBILEE'
5 GALLON (22)
- LANTANA MONTEVIDENSIS
'GOLD MOUND'
1 GALLON (337)
- LANTANA MONTEVIDENSIS
TRAILING PURPLE
1 GALLON (178)
- ACACIA REDOLENS
'DESERT CARPET' fm
1 GALLON (110)
- 1/2" SCREENED EXPRESS 'PAINTED DESERT'
DECOMPOSED GRANITE
2" DEPTH IN ALL LANDSCAPE AREAS



VICINITY MAP



T.J. McQUEEN & ASSOCIATES, INC.
 LANDSCAPE ARCHITECTURE
 URBAN DESIGN
 SITE PLANNING
 10450 N. 74th Street, Suite 120
 Scottsdale, Arizona 85258
 P. (602) 265-0320
 EMAIL: timmcqueen@tjmla.net



La.01

NEW HANGARS for
PMGA
 MESA, ARIZONA
 SUN STATE BUILDERS

job no. 19116
 drawn MGO
 approved RBW
 date 06.25.19

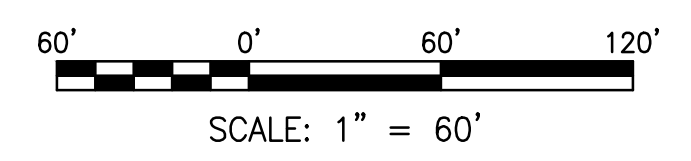
revisions

W winton architects, inc.
 1110 E. Missouri Ave., Suite 800, Phoenix, Arizona 85014
 (602) 230-9778 FAX (602) 265-9739

T.J. McQUEEN & ASSOCIATES, INC. LANDSCAPE ARCHITECTURE (TJMLA) EXPRESSLY RESERVES ITS COMMON LAW, COPYRIGHT & OTHER PROPERTY RIGHTS IN THESE PLANS. THESE PLANS ARE NOT TO BE REPRODUCED, CHANGED OR COPIED IN ANY FORM OR MANNER WHATSOEVER, NOR ARE THEY TO BE LOANED TO ANY THIRD PARTY WITHOUT FIRST OBTAINING THE EXPRESSED WRITTEN PERMISSION & CONSENT FROM T.J.M.A.

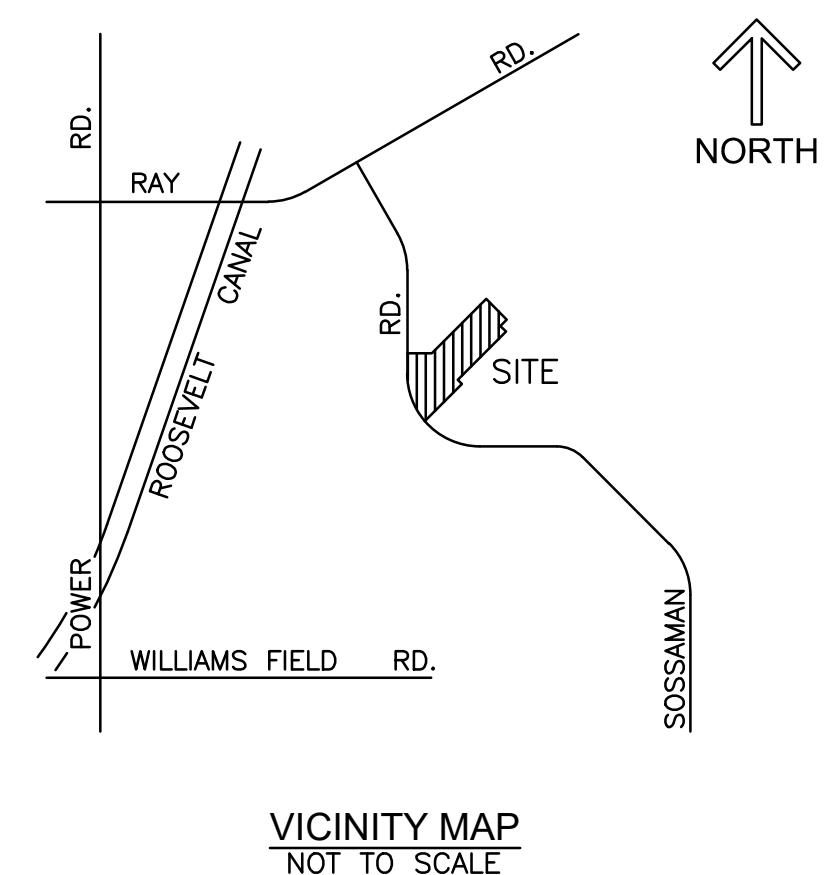
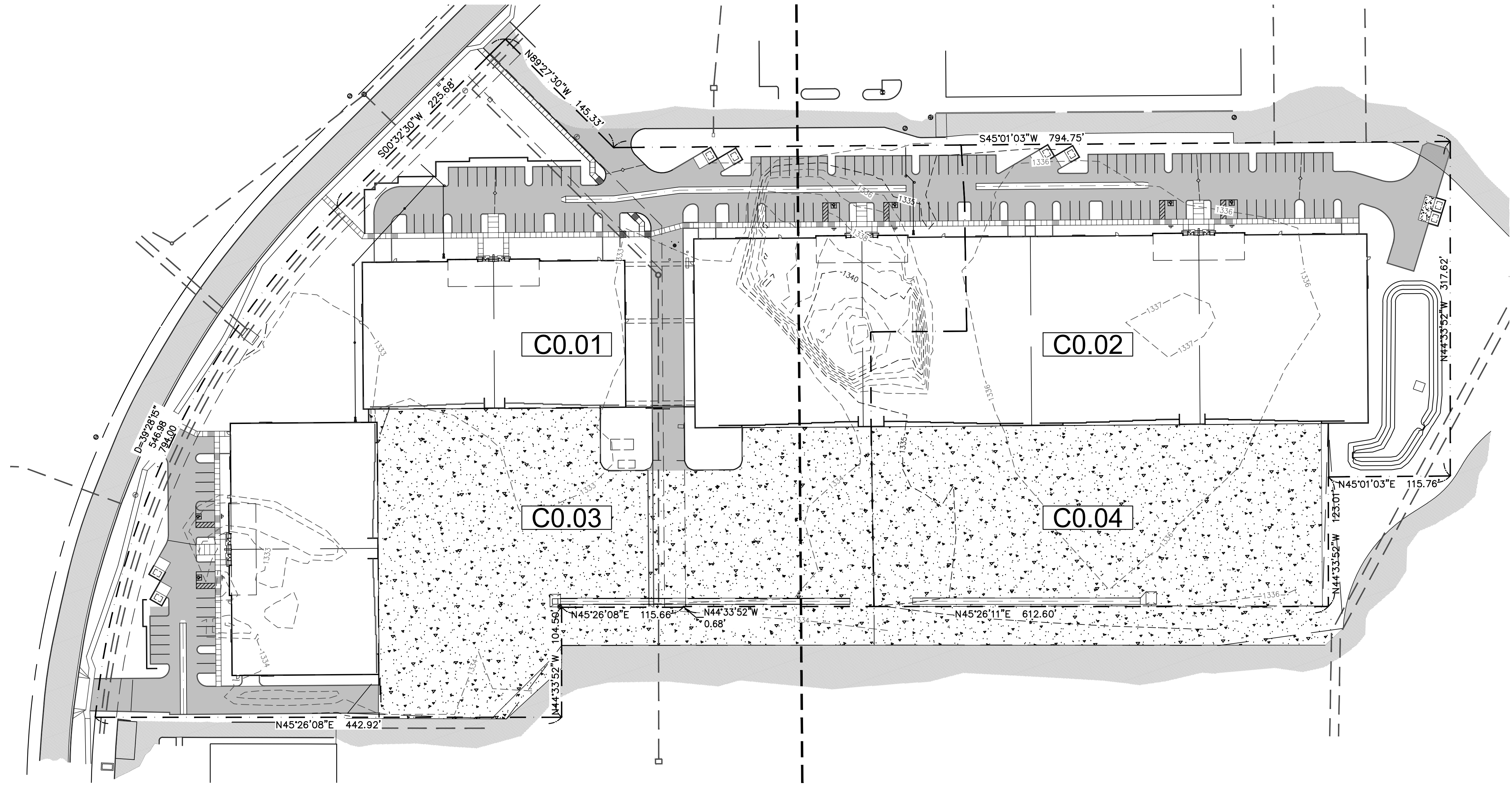
PRELIMINARY IMPROVEMENT PLANS

FOR
PMGA HANGAR
5559 S SOSSAMAN ROAD
APN: 304-37-004E



SHEET INDEX

SHEET	DESCRIPTION
CO.01	PRELIMINARY COVER SHEET
CO.02	PRELIMINARY GRADING AND DRAINAGE PLANS - NW HALF
CO.03	PRELIMINARY GRADING AND DRAINAGE PLANS - NE HALF
CO.04	PRELIMINARY UTILITY PLANS - NW HALF
CO.05	PRELIMINARY UTILITY PLANS - NE HALF



DEVELOPER
SUN STATE BUILDERS
1050 W WASHINGTON ST #214
TEMPE, ARIZONA 85281
BRIAN SNOW 480.896.1286
BSNOW@SUNSTATEBUILDERS.COM

ENGINEER
CEG APPLIED SCIENCES
12409 W INDIAN SCHOOL RD #C-303
AVONDALE, ARIZONA 85392
NATE COTTRELL 623.536.1993
NATE@PRECEG.COM

HRH	DATE	SCALE	PROJECT #	PURPOSE
HRH	06/27/19	1" = 20'	19-020	

SITE AREA
GROSS LOT AREA = 601,642 S.F. (13.0 AC)
NET LOT AREA = 552,532 S.F. (12.7 AC)

LEGAL DESCRIPTION
A PORTION OF THE EAST 1/2 OF SECTION 30, T-1-S, R-7-E, GILA AND SALT RIVER, BASE AND MERIDIAN, MARICOPA COUNTY, ARIZONA.

BEING A LEASED PORTION OF THE PHOENIX/MESA GATEWAY AIRPORT PARCEL PER DKT 12-0207529, M.C.R.

FLOOD INFO - FIRM DATA
ACCORDING TO FEMA FLOOD INSURANCE RATE MAP NO. 041302760 L DATED OCTOBER 16, 2013, THE SUBJECT PROPERTY IS LOCATED IN ZONE D. ZONE D IS DESCRIBED AS: "UNSTUDIED AREAS WHERE FLOOD HAZARDS ARE UNDETERMINED, BUT FLOODING IS POSSIBLE. NO MANDATORY FLOOD INSURANCE PURCHASE REQUIREMENTS APPLY, BUT COVERAGE IS AVAILABLE IN PARTICIPATING COMMUNITIES."

OFFSITE DRAINAGE
NO OFFSITE FLOWS FROM ADJACENT PARCELS ADVERSELY AFFECT THE SITE. SURROUNDING DEVELOPMENTS ALL EXIST WITHIN THE AIRPORT MASTER DRAINAGE PLAN AND RUNOFF IS DIRECTED TO SHARED BASINS.

ELEVATION BENCHMARK
THE NORTH LINE OF THE EAST 1/2 OF SEC 30, T-1-S, R-7-E, G&SRB&M.
SAID NORTH LINE BEING SOUTH 89°41'52" EAST

RETENTION CALCULATIONS
ONSITE RETENTION IS REQUIRED AND PROVIDED FOR THE FIRST FLUSH EVENT. THE FIRST 0.50 INCH RAINFALL. OVERFLOW FROM EVENTS BEYOND THIS FLOW INTO EXISTING STORM DRAIN FACILITIES FOR THE AIRPORT THAT DRAIN INTO SHARED RETENTION BASINS.

VOLUME REQUIRED:

$V_{req} = P \cdot C \cdot A / 12$
RAINFALL $P = 0.50$ in.
SURFACE COEFFICIENT, $C = 1.00$

WEST WATERSHED AREA	A=341,034 SF
VOLUME req'd	V=14,210 CF
EAST WATERSHED AREA	A=211,498 SF
VOLUME req'd	V=8,812 CF
TOTAL VOLUME req'd	V=23,022 CF

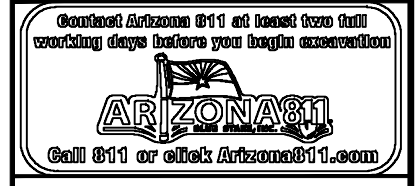
VOLUME PROVIDED:

WEST RETENTION BASIN	V=27,800 CF
EAST RETENTION BASIN	V=21,400 CF
TOTAL VOLUME	V=49,200 CF

PRELIMINARY GRADING AND DRAINAGE
FOR
PMGA HANGAR
5559 S SOSSAMAN ROAD
MESA, ARIZONA

PRE-CEG
12409 W INDIAN SCHOOL RD., AVONDALE, AZ 85392
PHONE: 623.536.1993 FAX: 623.748.9006

Professional Engineer
34081
NATHAN J
COTTRELL
06/27/19



G:\19-020 PMCA Hangar - Sunstate\DWG\CO.01_19020_PRE_G&D.dwg nccottrell

SOLID STATE AREA LIGHTING

RAZAR WALLMOUNT-LED

S P E C I F I C A T I O N S

OPTICAL HOUSING

Heavy cast low copper aluminum (A356 alloy; <0.2% copper) assembly with integral cooling fins. The Optical Panel mounting surface is milled flat (surface variance $\leq \pm .003"$) to facilitate thermal transfer of heat to housing and cooling fins. The Optical Housing bolts to the Electrical Housing forming a unified assembly. The minimum wall thickness is .188".

ELECTRICAL HOUSING

Heavy cast low copper aluminum (A356 alloy; <0.2% copper) assembly. Minimum wall thickness is .188". Fixture Mounting Plate affixes to mounting surface over a recessed j-box. Electrical Housing anchors on the top edge of the Mounting Plate and stainless steel recessed socket head screws tighten the Electrical Housing to the Mounting Plate from the bottom.

PLED™ OPTICAL MODULES

Emitters (LED's) are arrayed on a metal core PCB panel with each emitter located on a copper thermal transfer pad and enclosed by an LED refractor. LED optics completely seal each individual emitter to meet an IP66 rating. The asymmetric distributions, have a micro-reflector inside the refractor which re-directs the house side emitter output towards the street side and functions as a house side shielding element. Refractors are injection molded H12 acrylic. Each LED refractor is sealed to the PCB over an emitter and all refractors are retained by an aluminum frame. Any one Panel, or group of Panels in a luminaire, have the same optical pattern. LED refractors produce Type II, III, and Type IV site/area distributions as well as other specialty asymmetric distributions. Panels are field replaceable and field rotatable in 90° increments.

LED DRIVER(S)

Constant current electronic with a power factor of >.90 and a minimum operating temperature of -40°F/-40°C. Driver(s) is/are UL and cUL recognized and mounted directly against the Electrical Housing to facilitate thermal transfer, held down by universal clamps to facilitate easy removal. In-line terminal blocks facilitate wiring between the driver and optical arrays. Drivers accept an input of 120-277V, 50/60Hz or 347V-480V, 50,60Hz. (0 - 10V dimmable driver is standard. Driver has a minimum of 3KV internal surge protection. Luminaire supplied with 20KV surge protector for field accessible installation.)

LED EMITTERS

High output LED's are utilized with drive currents ranging from 350mA to 1050mA. 70CRI Minimum. LED's are available in standard Neutral White (4000K), or optional Cool White (5000K) or Warm White (3000K). Consult Factory for other LED options.

AMBER LED's

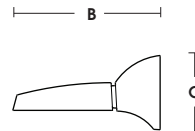
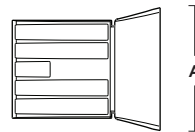
PCA (Phosphor Converted Amber) LED's utilize phosphors to create color output similar to LPS lamps and have a slight output in the blue spectral bandwidth. **TRA** (True Amber) LED's utilize material that emits light in the amber spectral bandwidth only without the use of phosphors.

FINISH

Electrostatically applied TGIC Polyester Powder Coat on substrate prepared with 20 PSI power wash at 140°F. Four step media blast and iron phosphate pretreatment for protection and paint adhesion. 400°F bake for maximum hardness and durability.

PROJECT NAME: _____

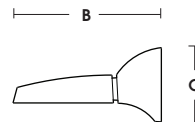
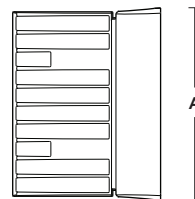
PROJECT TYPE: _____



FIXTURE	A	B	C
RZRW1	8.75" (22mm)	12" (305mm)	6" (152mm)
RZRW1-EM	11" (279mm)	14" (356mm)	6.5" (165mm)

RZR-WM1

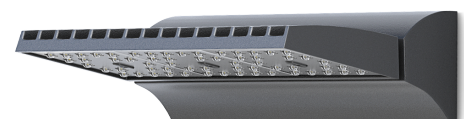
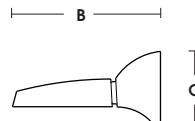
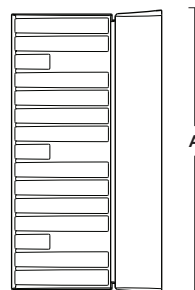
PATENT PENDING



FIXTURE	A	B	C
RZRW2	16" (406mm)	12" (305mm)	6" (152mm)
RZRW2-EM	16" (406mm)	14" (356mm)	6.5" (165mm)

RZR-WM2

PATENT PENDING



FIXTURE	A	B	C
RZRW3	23" (584mm)	12" (305mm)	6" (152mm)
RZRW3-EM	23" (584mm)	14" (356mm)	6.5" (165mm)

RZR-WM3

PATENT PENDING



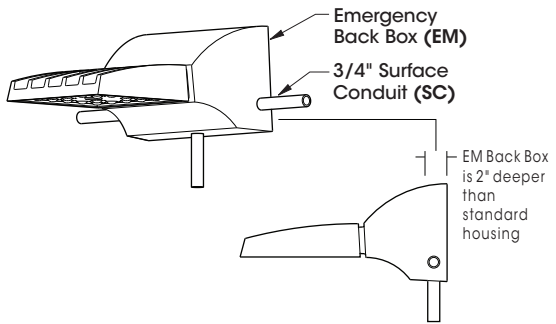
2019093



RAZAR WALLMOUNT SERIES-LED

S P E C I F I C A T I O N S

EMERGENCY OPTION



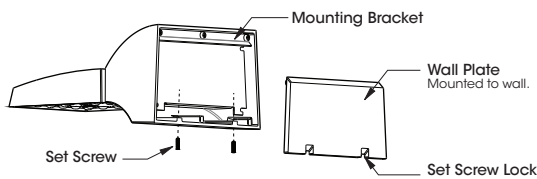
THE EMERGENCY OPTION BACK BOX EXTENDS 2" BEYOND THE STANDARD HOUSING AND CONTAINS THE EMERGENCY COMPONENTS (EC) INCLUDING BATTERIES OR CAN BE USED FOR SURFACE CONDUIT (SC) APPLICATIONS. THERE IS TO BE AN SC1, SC2, AND SC3 OPTION FOR THE DIFFERING HOUSING SIZES. SC SHIPS WITH THREADED CONDUIT PLUGS.

THE EM-LED SYSTEM PROVIDES POWER TO ALL LEDS IN THE ARRAY (20, 40, or 60) TO MEET THE FOLLOWING LIGHT LEVELS FOR A MINIMUM OF 90 MINUTES -

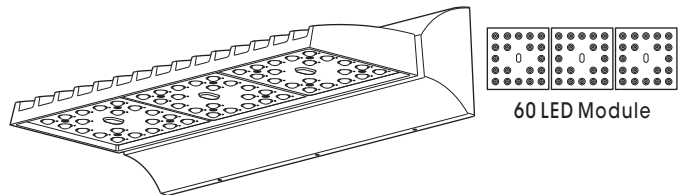
- WM1 = 45% @ 350MA
- WM2 = 36% @ 350MA
- WM3 = 24% @ 350MA

*MULTIPLY THE % ABOVE BY THE LUMEN OUTPUT @ 350MA

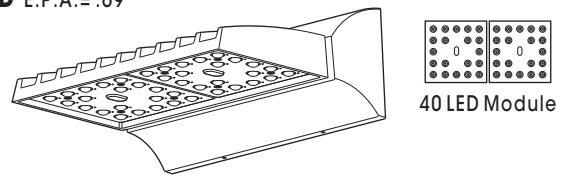
WALL MOUNTING



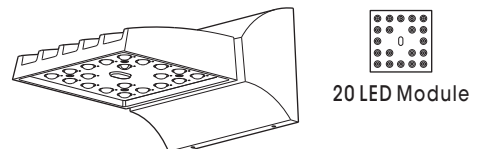
PLED® MODULES



RZR-WM3-LED E.P.A. = .69
Available in:
60 LED Module



RZR-WM2-LED E.P.A. = .47
Available in:
40 LED Module



RZR-WM1-LED E.P.A. = .33
Available in:
20 LED Module

MAX INPUT WATTAGE

# OF LED's	350mA	525mA	700mA	1050mA
60	68W	99W	131W	198W
40	45W	66W	87W	134W
20	23W	33W	44W	66W

Spec/Order Example: RZR-WM2/PLED-IV/40LED-700mA/CW/277/RAL-8019-S/SF

S P E C / O R D E R I N G I N F O R M A T I O N

MODEL	OPTICS	LED MODE			VOLTAGE	FINISH	OPTIONS
MODEL	OPTICS	LED MODE			VOLTAGE	FINISH	OPTIONS
<input type="checkbox"/> RZR-WM1	PLED® DISTRIBUTION TYPE <input type="checkbox"/> TYPE II PLED-II <input type="checkbox"/> TYPE II FRONT ROW PLED-II-FR	NO. LEDs RZR-WM1 <input type="checkbox"/> 20LED	DRIVE CURRENT <input type="checkbox"/> 350mA <input type="checkbox"/> 525mA <input type="checkbox"/> 700mA ¹	COLOR TEMP - CCT <input type="checkbox"/> NW (4000K)* *STANDARD <input type="checkbox"/> CW (5000K) <input type="checkbox"/> WW (3000K) AMBER ² <input type="checkbox"/> PHOSPHOR CONVERTED AMBER PCA <input type="checkbox"/> TRUE AMBER ³ TRA	<input type="checkbox"/> 120 <input type="checkbox"/> 208 <input type="checkbox"/> 240 <input type="checkbox"/> 277 <input type="checkbox"/> 347 <input type="checkbox"/> 480	STANDARD TEXTURED FINISH <input type="checkbox"/> BLACK RAL-9005-T <input type="checkbox"/> WHITE RAL-9003-T <input type="checkbox"/> GREY RAL-7004-T <input type="checkbox"/> DARK BRONZE RAL-8019-T <input type="checkbox"/> GREEN RAL-6005-T FOR SMOOTH FINISH REPLACE SUFFIX "T" WITH SUFFIX "S" (EXAMPLE: RAL-9005-S) CONSULT FACTORY FOR CUSTOM COLORS	<input type="checkbox"/> HIGH-LOW DIMMING FOR EXTERNAL CONTROL... HLSW <input type="checkbox"/> HOUSE SIDE SHIELDING HS-PLED <input type="checkbox"/> PHOTO CELL + VOLTAGE (EXAMPLE: PC120V)... PC+V <input type="checkbox"/> SINGLE FUSE (120V & 277V)... SF <input type="checkbox"/> DOUBLE FUSE (208V & 240V)... DF <input type="checkbox"/> STEP DIM MOTION SENSOR (PROGRAMMED 50/100) MS-F211 <input type="checkbox"/> REMOTE MOTION SENSOR CONFIGURATOR MS-FC10 <input type="checkbox"/> EMERGENCY BACKUP 1... EM1 <input type="checkbox"/> EMERGENCY BACKUP 1 (HOUSING ONLY)... EMH1 <input type="checkbox"/> EMERGENCY BACKUP 2... EM2 <input type="checkbox"/> EMERGENCY BACKUP 3... EM3 <input type="checkbox"/> SURFACE CONDUIT 1... SC1 <input type="checkbox"/> SURFACE CONDUIT 2... SC2 <input type="checkbox"/> SURFACE CONDUIT 3... SC3
<input type="checkbox"/> RZR-WM2	<input type="checkbox"/> TYPE III PLED-III <input type="checkbox"/> TYPE III WIDE PLED-III-W	RZR-WM2 <input type="checkbox"/> 40LED	<input type="checkbox"/> 1050mA ¹				
<input type="checkbox"/> RZR-WM3	<input type="checkbox"/> TYPE IV PLED-IV <input type="checkbox"/> TYPE IV-FT PLED-IV-FT	RZR-WM3 <input type="checkbox"/> 60LED					

NOTES:
 1 - 700mA and 1050mA NOT FOR USE WITH TRA LEDS
 2 - NARROW BAND AMBERS HAVE NO DEFINABLE CCT EQUIVALENT
 3 - AVAILABLE IN 350mA & 525mA DRIVE CURRENTS ONLY



RAZAR WALLMOUNT-LED

LAMP/ELECTRICAL GUIDE

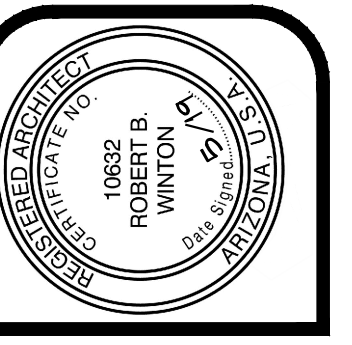
LED COUNT	SOURCE TYPE	SOURCE	INITIAL LUMENS - 4000K	INITIAL LUMENS - 3000K	INITIAL LUMENS - 5000K	L70 GREATER THAN (HR)-TM21	STARTING TEMP.	SYSTEM WATTS	VOLTS	MAX INPUT AMPS
20	LED	20 PLED® Optical Module - 350mA	2,706 - 2,993	2,571 - 2,843	2,841 - 3,143	60,000+	-20°F	22	120 277 347	0.19 0.08 0.07
20	LED	20 PLED® Optical Module - 525mA	3,897 - 4,310	3,702 - 4,095	4,092 - 4,526	60,000+	-20°F	33	120 277 347	0.28 0.12 0.10
20	LED	20 PLED® Optical Module - 700mA	4,942 - 5,466	4,695 - 5,193	5,189 - 5,739	60,000+	-20°F	44	120 277 347	0.37 0.16 0.13
20	LED	20 PLED® Optical Module - 1050mA	6,564 - 7,260	6,236 - 6,897	6,892 - 7,623	60,000+	-20°F	65	120 277 347	0.55 0.24 0.19
40	LED	40 PLED® Optical Module - 350mA	5,585 - 6,178	5,206 - 5,869	5,864 - 6,487	60,000+	-20°F	43	120 277 347	0.36 0.16 0.13
40	LED	40 PLED® Optical Module - 525mA	8,059 - 8,914	7,656 - 8,468	8,462 - 9,360	60,000+	-20°F	65	120 277 347	0.55 0.24 0.19
40	LED	40 PLED® Optical Module - 700mA	10,240 - 11,327	9,728 - 10,761	10,752 - 11,893	60,000+	-20°F	87	120 277 347	0.73 0.32 0.26
40	LED	40 PLED® Optical Module - 1050mA	13,642 - 15,089	12,690 - 14,335	14,324 - 15,843	60,000+	-20°F	129	120 277 347	1.08 0.47 0.38
60	LED	60 PLED® Optical Module - 350mA	8,118 - 8,979	7,712 - 8,530	8,524 - 9,428	60,000+	-20°F	65	120 277 347	0.55 0.24 0.19
60	LED	60 PLED® Optical Module - 525mA	11,690 - 12,930	11,106 - 12,284	12,275 - 13,577	60,000+	-20°F	98	120 277 347	0.82 0.36 0.29
60	LED	60 PLED® Optical Module - 700mA	14,825 - 16,398	14,084 - 15,578	15,566 - 17,218	60,000+	-20°F	131	120 277 347	1.09 0.47 0.38
60	LED	60 PLED® Optical Module - 1050mA	19,691 - 21,780	18,706 - 20,691	20,676 - 22,869	60,000+	-20°F	193	120 277 347	1.61 0.70 0.56

NOTES:

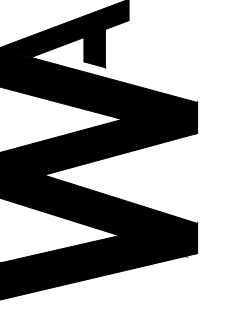
1. Max Input Amps is the highest of starting, operating, or open circuit currents
2. Lumen values for LED Modules vary according to the distribution type
3. System Watts includes the source watts and all driver components.
4. Fuse value should be sufficient to protect all wiring components.
5. L70(10K) - TM-21 6x rule applied
L70(10K) - Calculated = 244,000 @ 700mA
= 102,000 @ 1050mA

WARNING: All fixtures must be installed in accordance with local codes or the National Electrical Code. Failure to do so may result in serious personal injury.





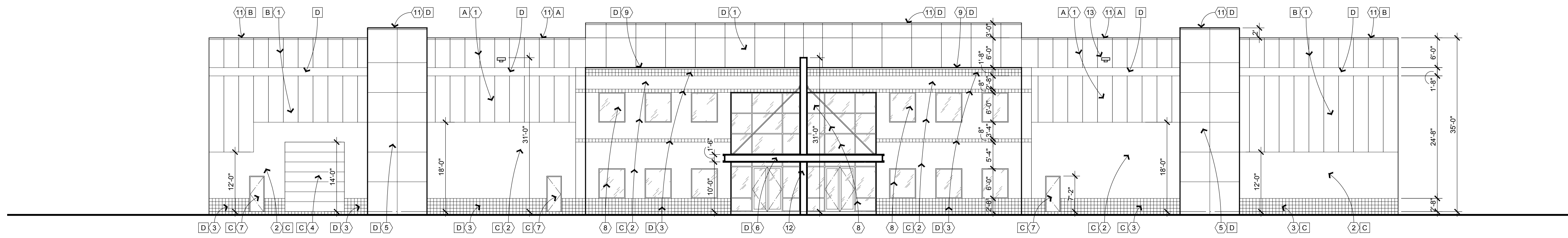
winton architects, inc.
 1110 E. Missouri Ave., Suite 800, Phoenix, Arizona 85014
 (602) 230-9778 FAX (602) 265-9739



**NEW HANGAR 'A' for
 PMGA
 MESA, ARIZONA
 SUN STATE BUILDERS**

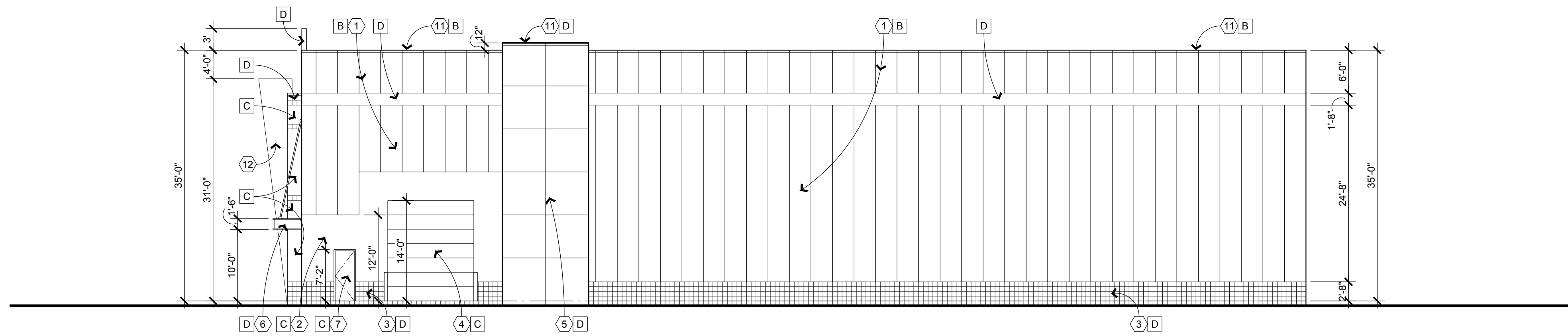
job no. 19116
 drawn MGO
 approved RBW
 date 5/09/19

revisions



HANGAR 'A' - WEST ELEVATION

SCALE: 3/32" = 1'-0"



HANGAR 'A' - SOUTH ELEVATION

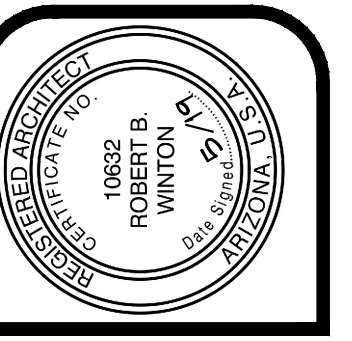
SCALE: 3/32" = 1'-0"

EXTERIOR PAINT COLORS- PMGA HANGARS

- A White, DEW 380
- B Winter Morn, DET 617
- C Foil, DE 6360
- D Surfs Up, DET 583

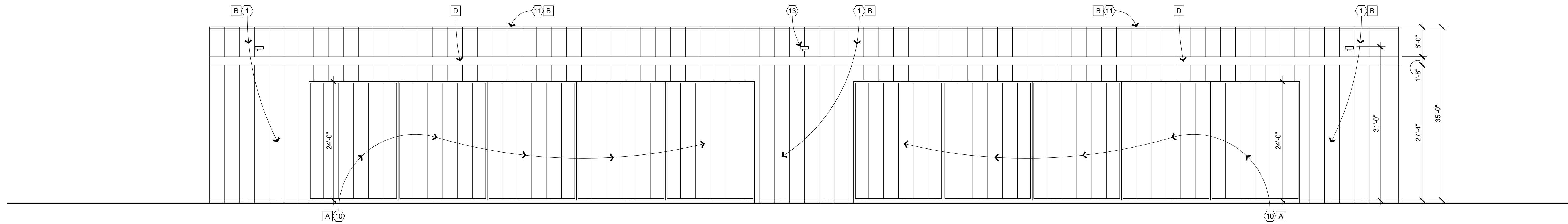
EXTERIOR ELEVATION KEYNOTES

1. Pre-engineered metal siding
2. 8" split faced cmu
3. 8" center scored cmu
4. Steel sectional insulated overhead door
5. Pre-engineered metal panel with score joints
6. Steel canopy per details
7. Hollow metal insulated door and frame
8. Fixed insulated glass in clear anodized aluminum frames. Glass to be Sun Guard by Guardian Glass. Super Neutral 68 on Gray ("U" value=0.29, SHGC=0.25)
9. 2" solid cmu vap block
10. Pre-engineered insulated siding hangar doors
11. 26 ga trim cap at top of parapet
12. Vertical structural element break metal
13. Wall pack light fixture per electrical drawings



job no. 19116
 drawn MGO
 approved RBW
 date 5/09/19

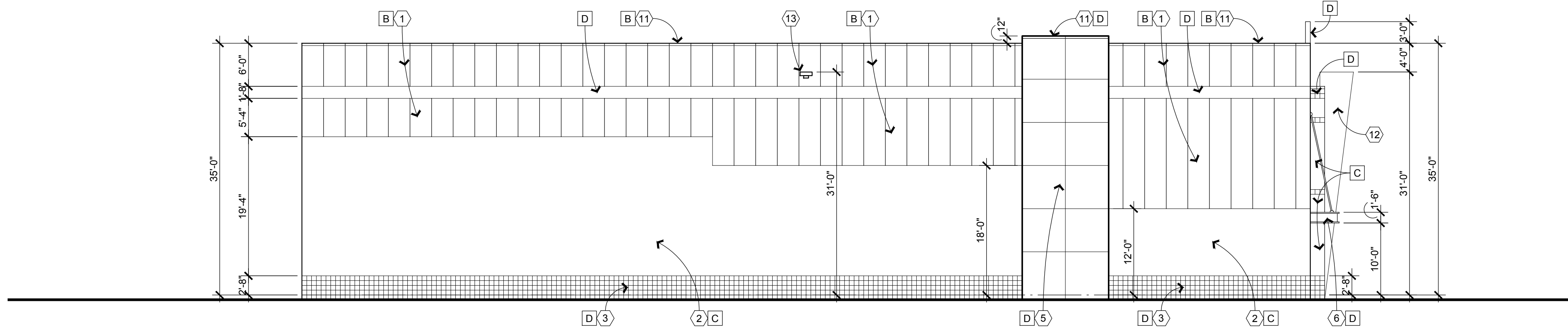
revisions



HANGAR 'A' - EAST ELEVATION

SCALE: 3/32" = 1'-0"

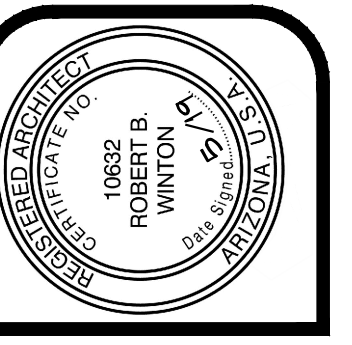
- EXTERIOR PAINT COLORS- PMGA HANGARS
- A White, DEW 380
 - B Winter Morn, DET 617
 - C Foil, DE 6360
 - D Surfs Up, DET 583



HANGAR 'A' - NORTH ELEVATION

SCALE: 3/32" = 1'-0"

- ⬡ EXTERIOR ELEVATION KEYNOTES
1. Pre-engineered metal siding
 2. 8" split faced cmu
 3. 8" center scored cmu
 4. Steel sectional insulated overhead door
 5. Pre-engineered metal panel with score joints
 6. Steel canopy per details
 7. Hollow metal insulated door and frame
 8. Fixed insulated glass in clear anodized aluminum frames. Glass to be Sun Guard by Guardian Glass. Super Neutral 68 on Gray ("U" value=0.29, SHGC=0.25)
 9. 2" solid cmu vap block
 10. Pre-engineered insulated siding hangar doors
 11. 26 ga trim cap at top of parapet
 12. Vertical structural element break metal
 13. Wall pack light fixture per electrical drawings



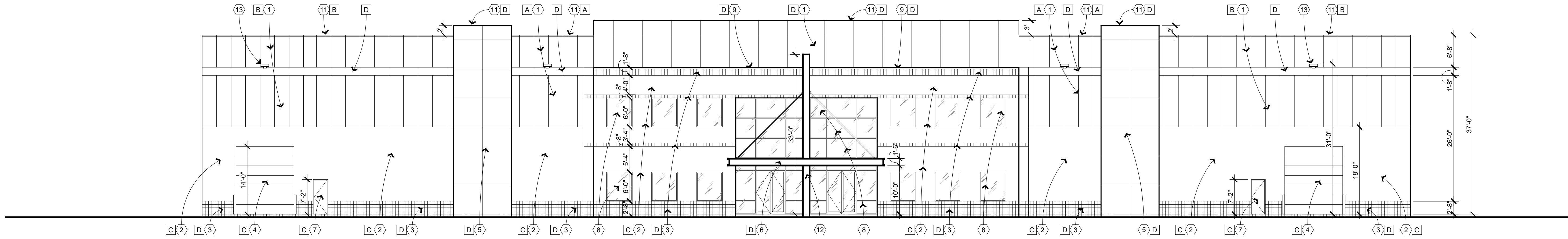
winton architects, inc.
 1110 E. Missouri Ave., Suite 800, Phoenix, Arizona 85014
 (602) 230-9778 FAX (602) 265-9739



**NEW HANGAR 'B' for
 PMGA
 MESA, ARIZONA
 SUN STATE BUILDERS**

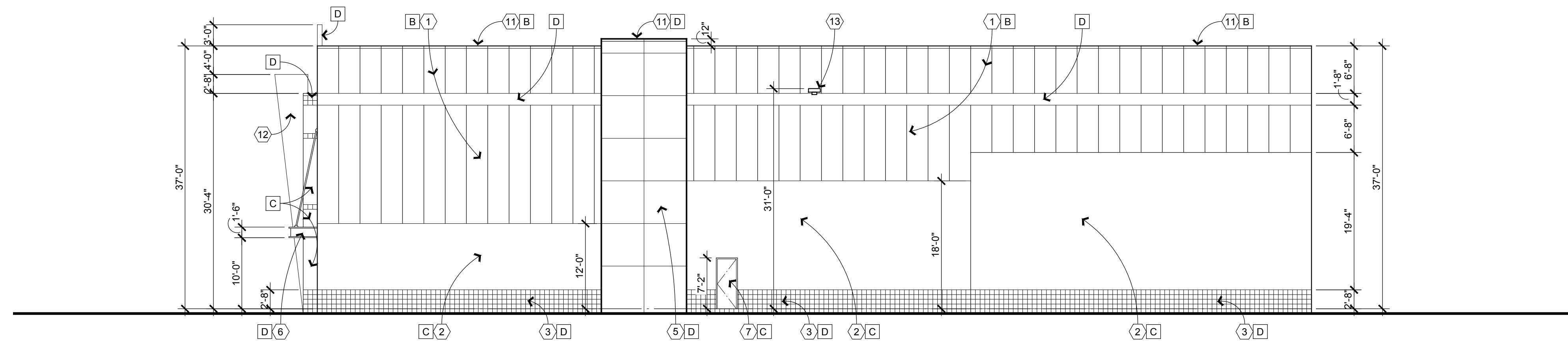
job no. 19116
 drawn MGO
 approved RBW
 date 5/09/19

revisions



HANGAR 'B' - NORTH ELEVATION

SCALE: 3/32" = 1'-0"



HANGAR 'B' - WEST ELEVATION

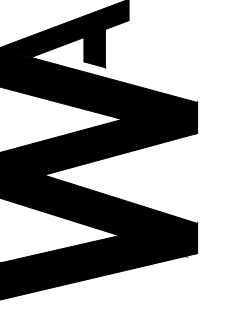
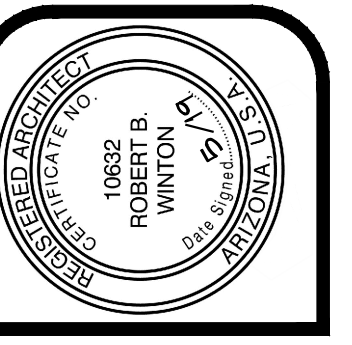
SCALE: 3/32" = 1'-0"

EXTERIOR PAINT COLORS- PMGA HANGARS

- A White, DEW 380
- B Winter Morn, DET 617
- C Foil, DE 6360
- D Surfs Up, DET 583

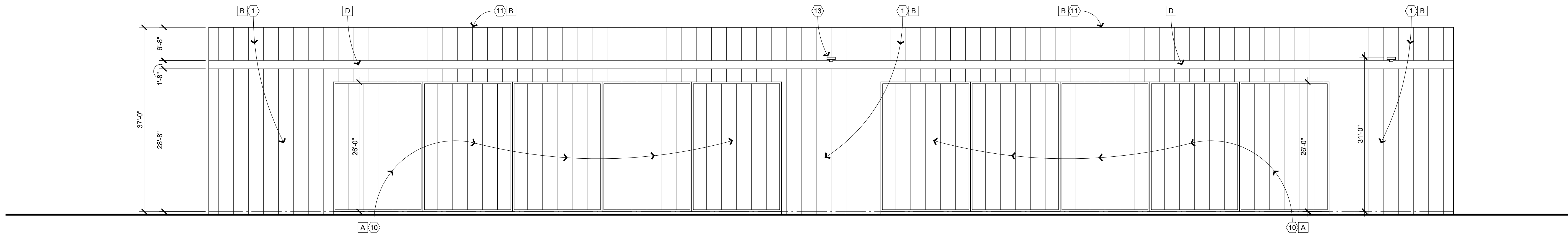
EXTERIOR ELEVATION KEYNOTES

1. Pre-engineered metal siding
2. 8" split faced cmu
3. 8" center scored cmu
4. Steel sectional insulated overhead door
5. Pre-engineered metal panel with score joints
6. Steel canopy per details
7. Hollow metal insulated door and frame
8. Fixed insulated glass in clear anodized aluminum frames. Glass to be Sun Guard by Guardian Glass. Super Neutral 68 on Gray ("U" value=0.29, SHGC=0.25)
9. 2" solid cmu vap block
10. Pre-engineered insulated siding hangar doors
11. 26 ga trim cap at top of parapet
12. Vertical structural element break metal
13. Wall pack light fixture per electrical drawings



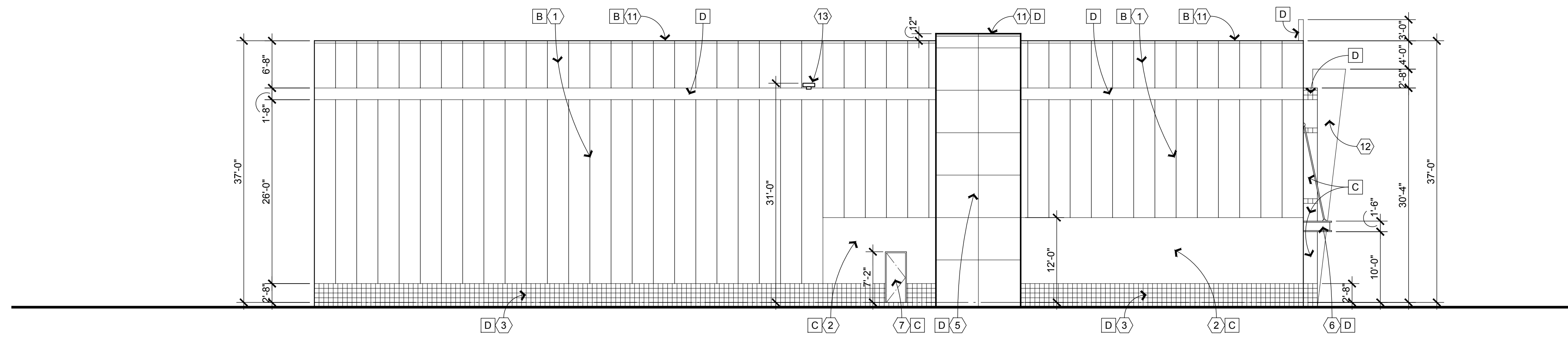
job no. 19116
 drawn MGO
 approved RBW
 date 5/09/19

revisions



HANGAR 'B' - SOUTH ELEVATION

SCALE: 3/32" = 1'-0"



HANGAR 'B' - EAST ELEVATION

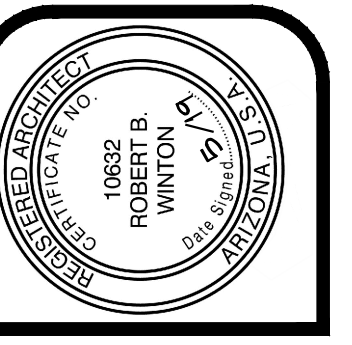
SCALE: 3/32" = 1'-0"

EXTERIOR PAINT COLORS- PMGA HANGARS

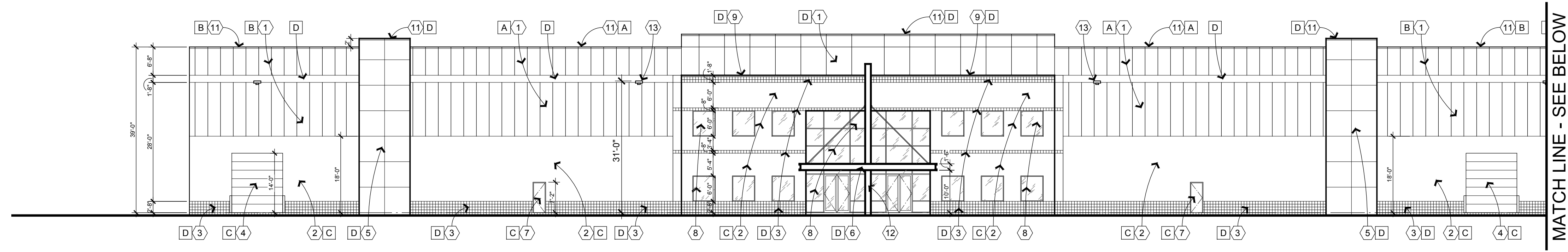
- A White, DEW 380
- B Winter Morn, DET 617
- C Foil, DE 6360
- D Surfs Up, DET 583

EXTERIOR ELEVATION KEYNOTES

1. Pre-engineered metal siding
2. 8" split faced cmu
3. 8" center scored cmu
4. Steel sectional insulated overhead door
5. Pre-engineered metal panel with score joints
6. Steel canopy per details
7. Hollow metal insulated door and frame
8. Fixed insulated glass in clear anodized aluminum frames. Glass to be Sun Guard by Guardian Glass. Super Neutral 68 on Gray ("U" value=0.29, SHGC=0.25)
9. 2" solid cmu vap block
10. Pre-engineered insulated siding hangar doors
11. 26 ga trim cap at top of parapet
12. Vertical structural element break metal
13. Wall pack light fixture per electrical drawings

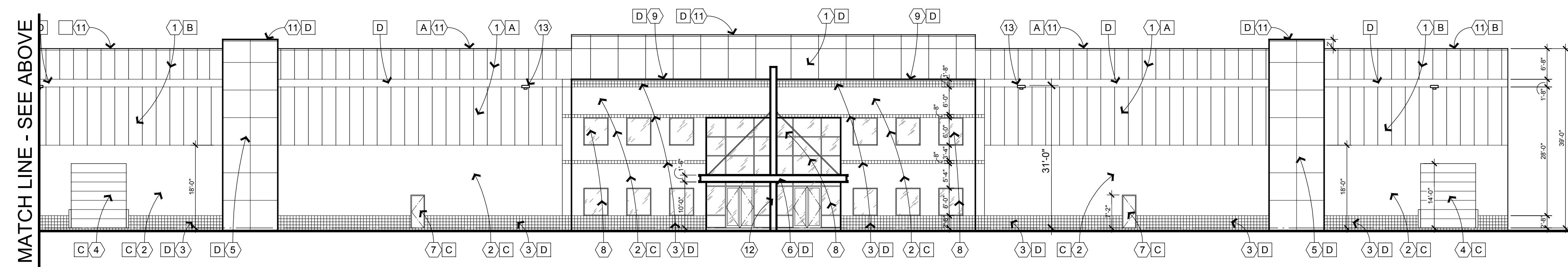


W winton architects, inc.
 1110 E. Missouri Ave., Suite 800, Phoenix, Arizona 85014
 (602) 230-9778 FAX (602) 265-9739



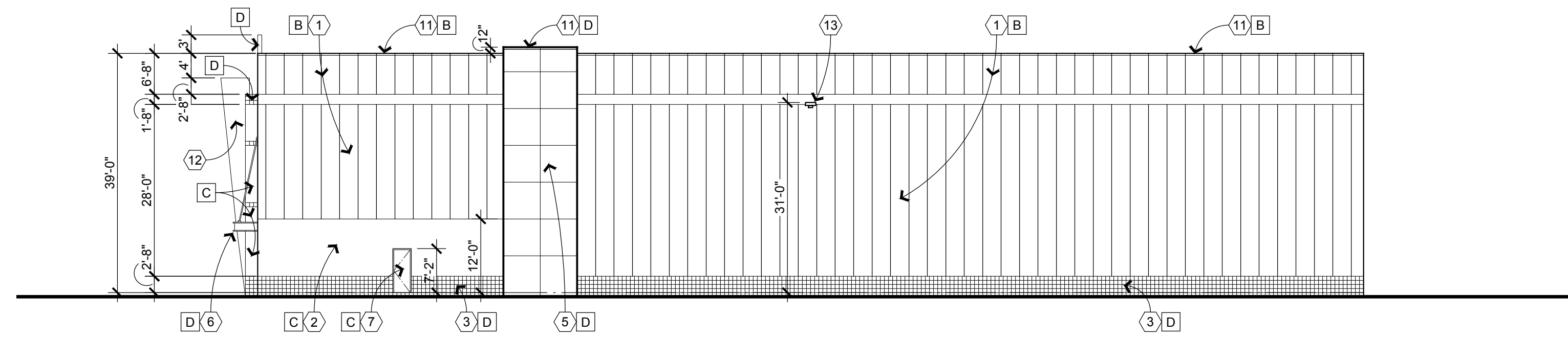
HANGAR 'C' - NORTH ELEVATION EAST END

SCALE: 1/16" = 1'-0"



HANGAR 'C' - NORTH ELEVATION WEST END

SCALE: 1/16" = 1'-0"



HANGAR 'C' - WEST ELEVATION

SCALE: 1/16" = 1'-0"

EXTERIOR PAINT COLORS- PMGA HANGARS

- A White, DEW 380
- B Winter Morn, DET 617
- C Foil, DE 6360
- D Surfs Up, DET 583

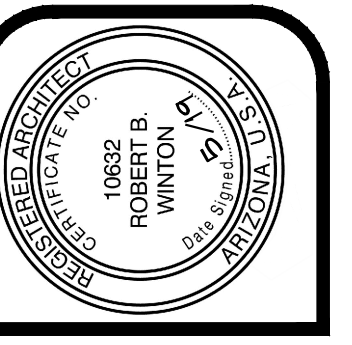
EXTERIOR ELEVATION KEYNOTES

1. Pre-engineered metal siding
2. 8" split faced cmu
3. 8" center scored cmu
4. Steel sectional insulated overhead door
5. Pre-engineered metal panel with score joints
6. Steel canopy per details
7. Hollow metal insulated door and frame
8. Fixed insulated glass in clear anodized aluminum frames. Glass to be Sun Guard by Guardian Glass. Super Neutral 68 on Gray ("U" value=0.29, SHGC=0.25)
9. 2" solid cmu vap block
10. Pre-engineered insulated siding hangar doors
11. 26 ga trim cap at top of parapet
12. Vertical structural element break metal
13. Wall pack light fixture per electrical drawings

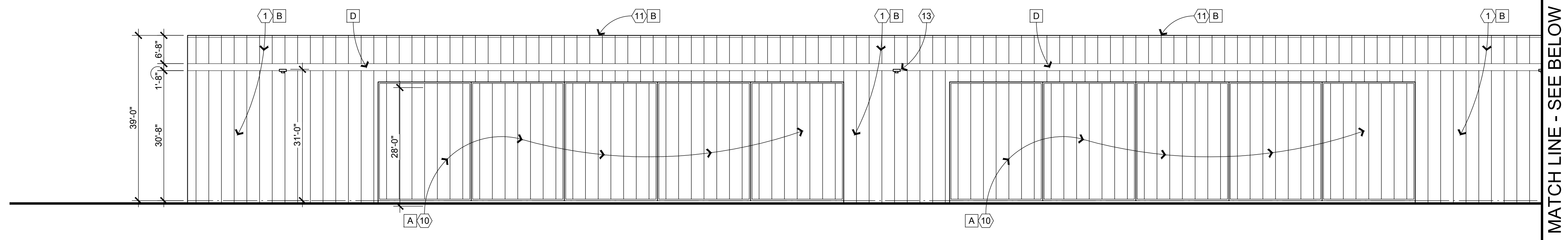
NEW HANGAR 'C' for
PMGA
 MESA, ARIZONA
 SUN STATE BUILDERS

job no. 19116
 drawn MGO
 approved RBW
 date 5/09/19

revisions

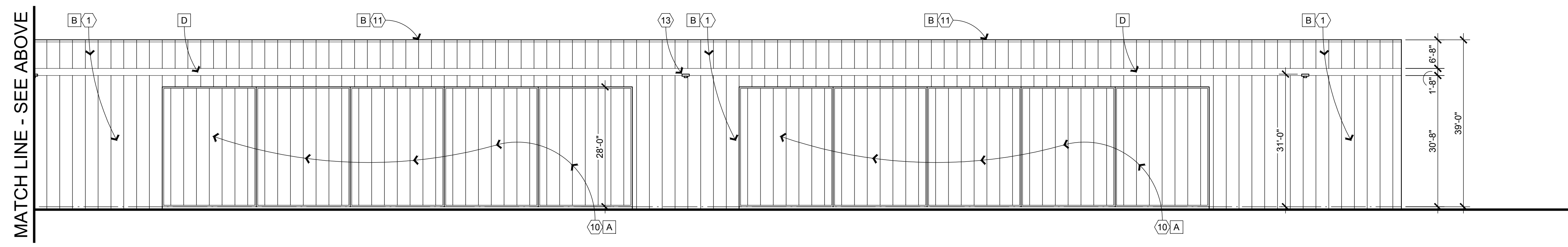


W winton architects, inc.
 1110 E. Missouri Ave., Suite 800, Phoenix, Arizona 85014
 (602) 230-9778 FAX (602) 265-9739



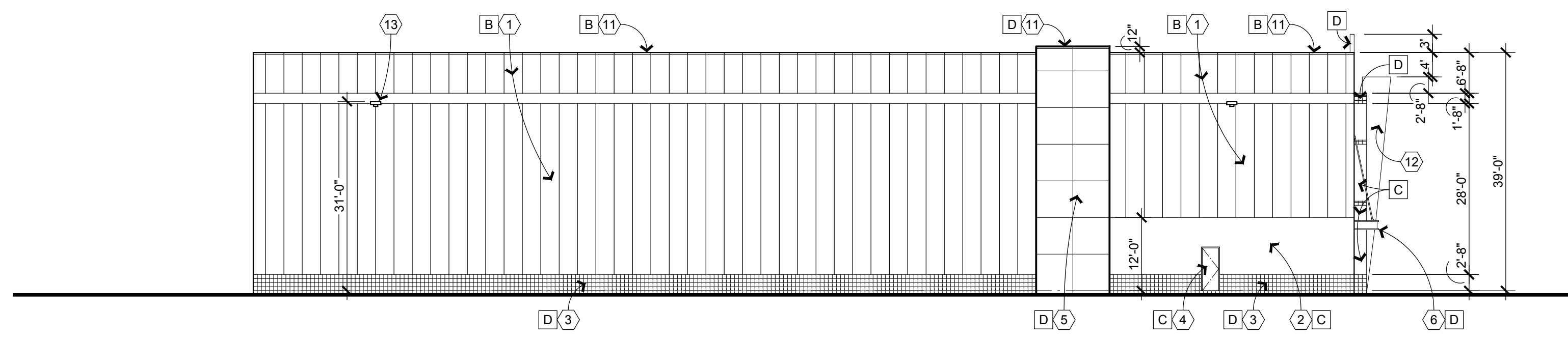
HANGAR 'C' - SOUTH ELEVATION WEST END

SCALE: 1/16" = 1'-0"



HANGAR 'C' - SOUTH ELEVATION EAST END

SCALE: 1/16" = 1'-0"



HANGAR 'C' - EAST ELEVATION

SCALE: 1/16" = 1'-0"

- EXTERIOR PAINT COLORS- PMGA HANGARS**
- A White, DEW 380
 - B Winter Morn, DET 617
 - C Foil, DE 6360
 - D Surfs Up, DET 583

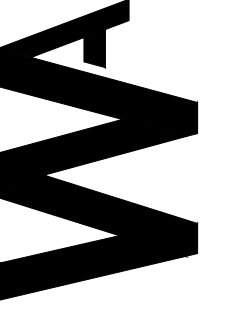
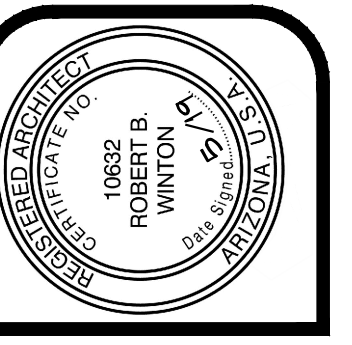
- EXTERIOR ELEVATION KEYNOTES**
1. Pre-engineered metal siding
 2. 8" split faced cmu
 3. 8" center scored cmu
 4. Steel sectional insulated overhead door
 5. Pre-engineered metal panel with score joints
 6. Steel canopy per details
 7. Hollow metal insulated door and frame
 8. Fixed insulated glass in clear anodized aluminum frames. Glass to be Sun Guard by Guardian Glass. Super Neutral 68 on Gray (U value=0.29, SHGC=0.25)
 9. 2" solid cmu vap block
 10. Pre-engineered insulated siding hangar doors
 11. 26 ga trim cap at top of parapet
 12. Vertical structural element break metal
 13. Wall pack light fixture per electrical drawings

NEW HANGAR 'C' for
PMGA
 MESA, ARIZONA
 SUN STATE BUILDERS

job no. 19116
 drawn MGO
 approved RBW
 date 5/09/19

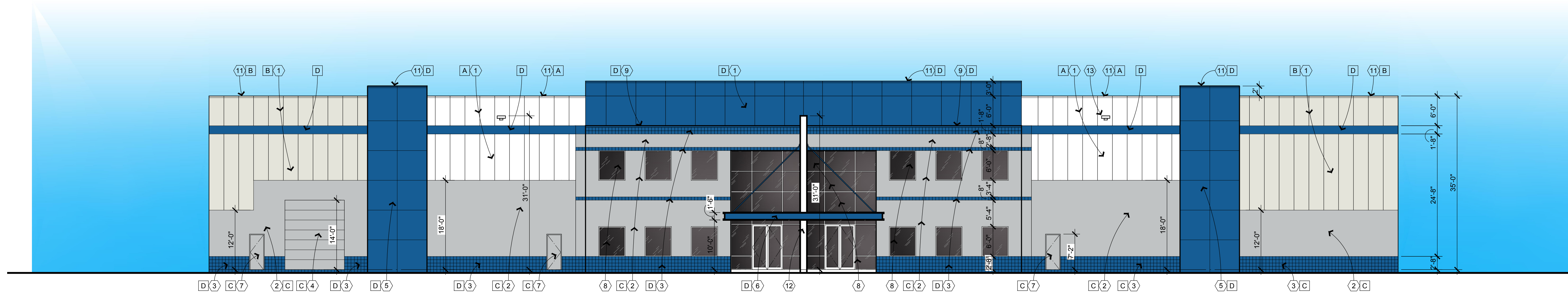
revisions

A-7.1



job no. 19116
 drawn MGO
 approved RBW
 date 5/09/19

revisions



HANGAR 'A' - WEST ELEVATION

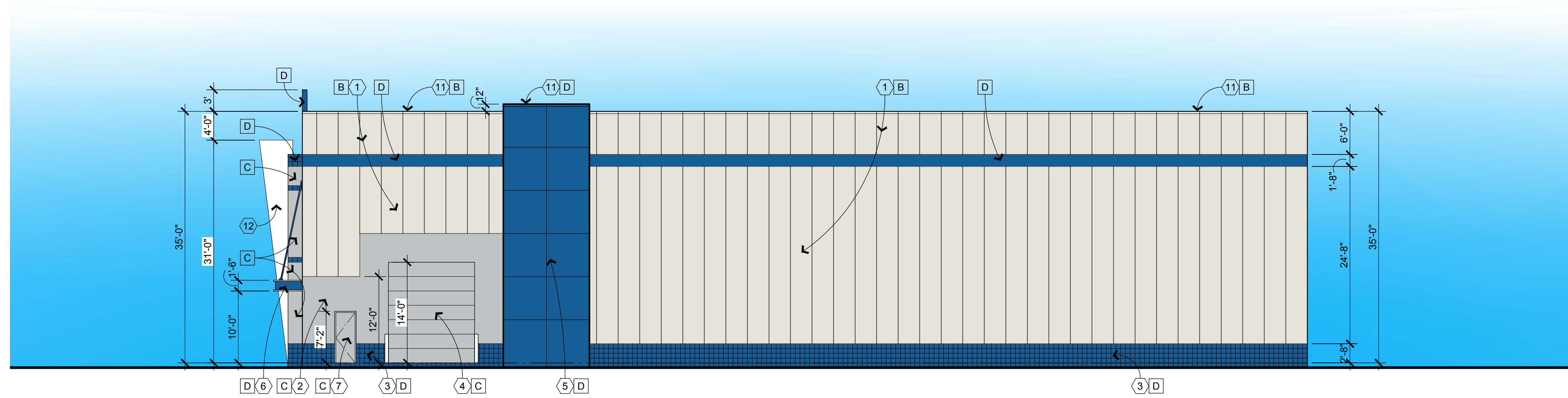
SCALE: 3/32" = 1'-0"

EXTERIOR PAINT COLORS- PMGA HANGARS

- A White, DEW 380
- B Winter Morn, DET 617
- C Foli, DE 6360
- D Surfs Up, DET 583

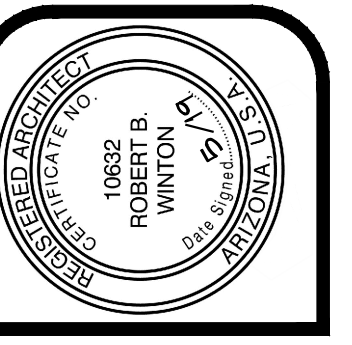
EXTERIOR ELEVATION KEYNOTES

1. Pre-engineered metal siding
2. 8" split faced cmu
3. 8" center scored cmu
4. Steel sectional insulated overhead door
5. Pre-engineered metal panel with score joints
6. Steel canopy per details
7. Hollow metal insulated door and frame
8. Fixed insulated glass in clear anodized aluminum frames. Glass to be Sun Guard by Guardian Glass. Super Neutral 68 on Gray ("U" value=0.29, SHGC=0.25)
9. 2" solid cmu vap block
10. Pre-engineered insulated siding hangar doors
11. 26 ga trim cap at top of parapet
12. Vertical structural element break metal
13. Wall pack light fixture per electrical drawings

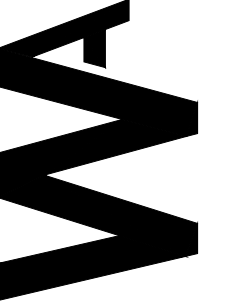


HANGAR 'A' - SOUTH ELEVATION

SCALE: 3/32" = 1'-0"



winton architects, inc.
 1110 E. Missouri Ave., Suite 800, Phoenix, Arizona 85014
 (602) 230-9778 FAX (602) 265-9739

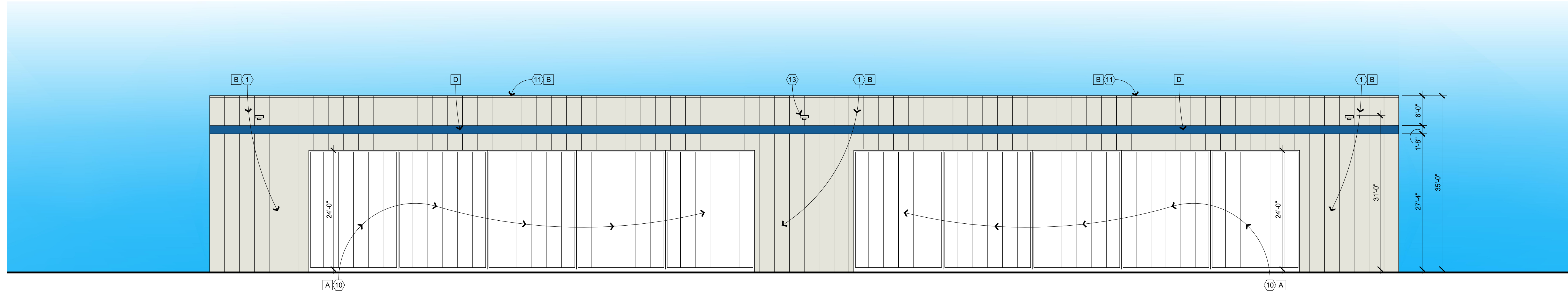


**NEW HANGAR 'A' for
 PMGA
 MESA, ARIZONA
 SUN STATE BUILDERS**

job no. 19116
 drawn MGO
 approved RBW
 date 5/09/19

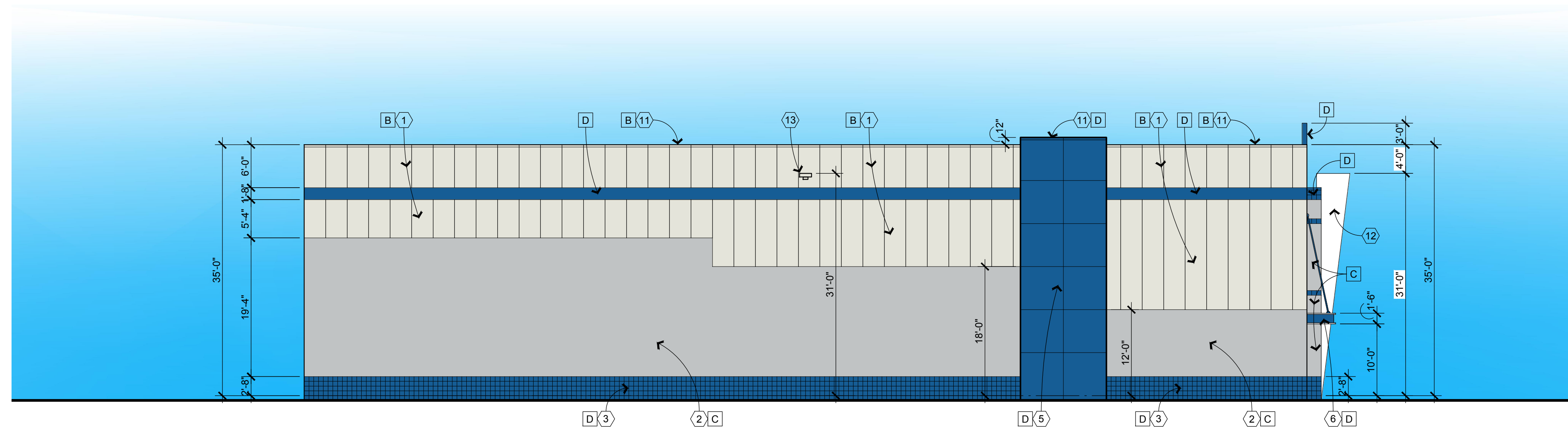
revisions

A-2.1



HANGAR 'A' - EAST ELEVATION

SCALE: 3/32" = 1'-0"



HANGAR 'A' - NORTH ELEVATION

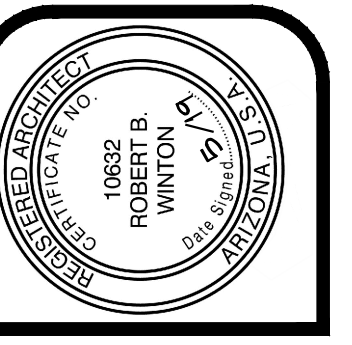
SCALE: 3/32" = 1'-0"

EXTERIOR PAINT COLORS- PMGA HANGARS

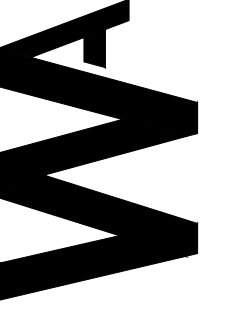
- A White, DEW 380
- B Winter Morn, DET 617
- C Foli, DE 6360
- D Surfs Up, DET 583

EXTERIOR ELEVATION KEYNOTES

1. Pre-engineered metal siding
2. 8" split faced cmu
3. 8" center scored cmu
4. Steel sectional insulated overhead door
5. Pre-engineered metal panel with score joints
6. Steel canopy per details
7. Hollow metal insulated door and frame
8. Fixed insulated glass in clear anodized aluminum frames. Glass to be Sun Guard by Guardian Glass. Super Neutral 68 on Gray ("U" value=0.29, SHGC=0.25)
9. 2" solid cmu vap block
10. Pre-engineered insulated siding hangar doors
11. 26 ga trim cap at top of parapet
12. Vertical structural element break metal
13. Wall pack light fixture per electrical drawings



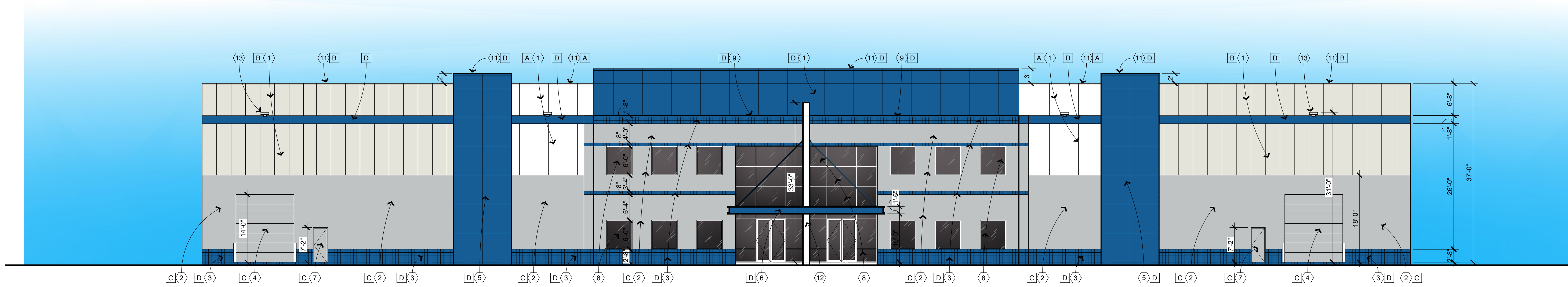
winton architects, inc.
 1110 E. Missouri Ave., Suite 800, Phoenix, Arizona 85014
 (602) 230-9778 FAX (602) 265-9739



**NEW HANGAR 'B' for
 PMGA
 MESA, ARIZONA
 SUN STATE BUILDERS**

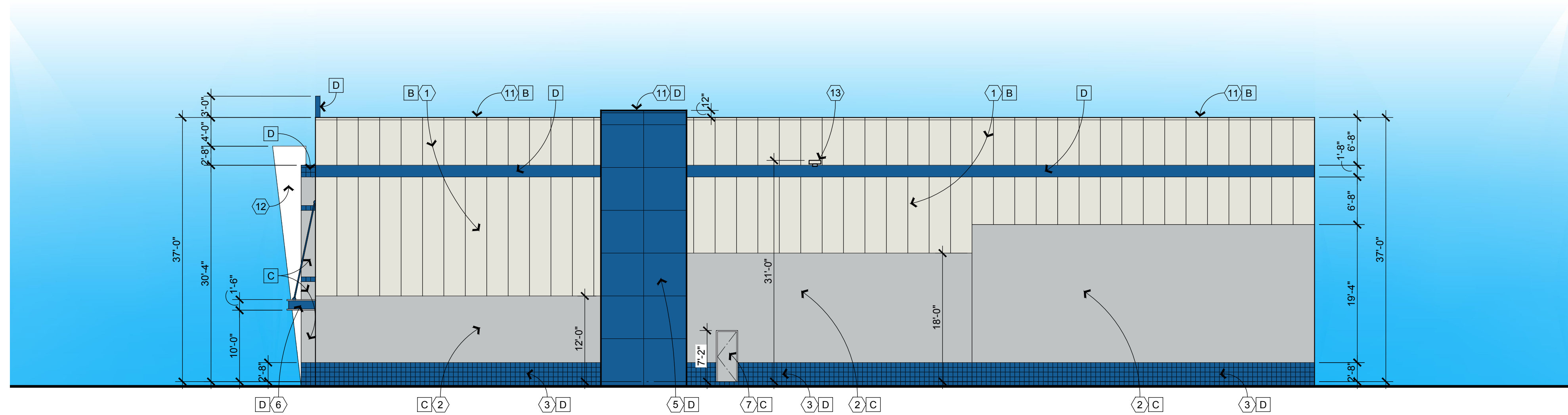
job no. 19116
 drawn MGO
 approved RBW
 date 5/09/19

revisions



HANGAR 'B' - NORTH ELEVATION

SCALE: 3/32" = 1'-0"



HANGAR 'B' - WEST ELEVATION

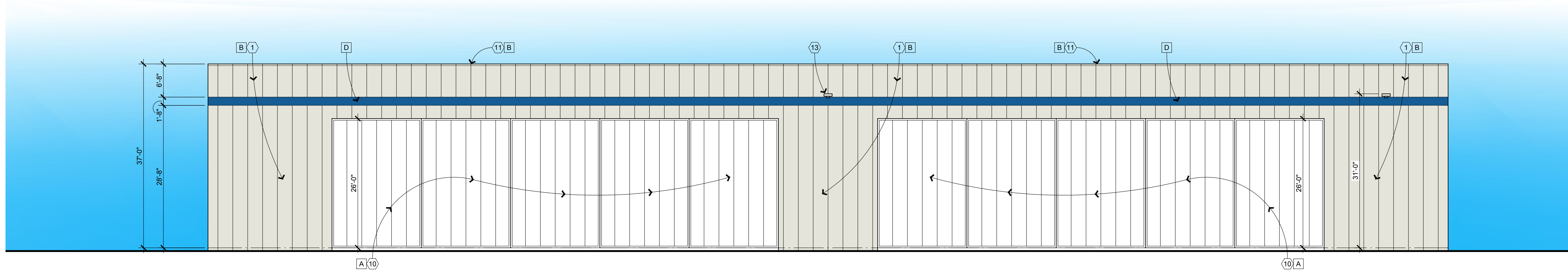
SCALE: 3/32" = 1'-0"

EXTERIOR PAINT COLORS- PMGA HANGARS

- A White, DEW 380
- B Winter Morn, DET 617
- C Foil, DE 6360
- D Surfs Up, DET 583

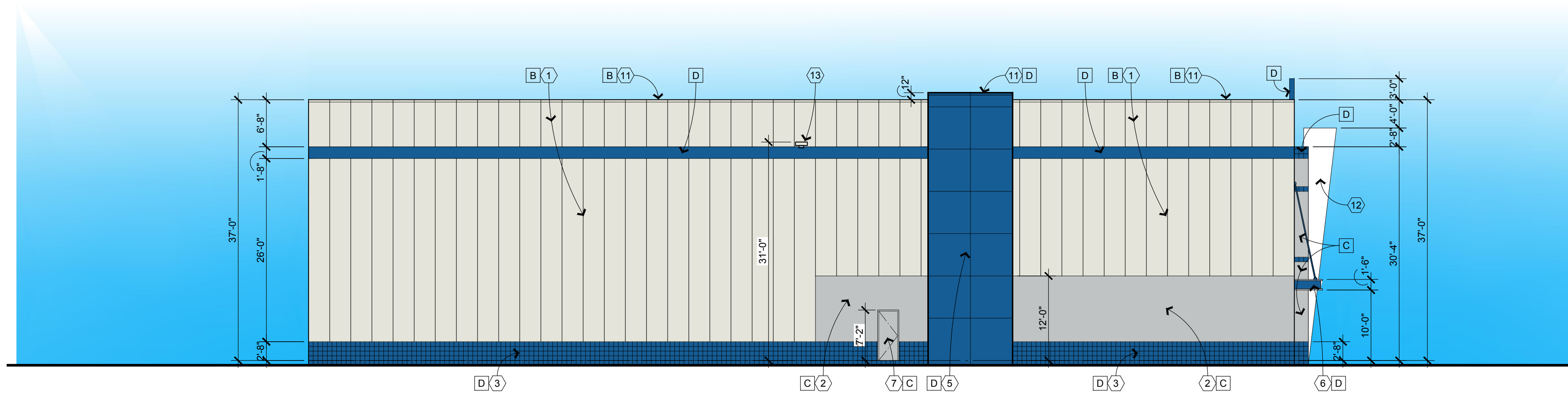
EXTERIOR ELEVATION KEYNOTES

1. Pre-engineered metal siding
2. 8" split faced cmu
3. 8" center scored cmu
4. Steel sectional insulated overhead door
5. Pre-engineered metal panel with score joints
6. Steel canopy per details
7. Hollow metal insulated door and frame
8. Fixed insulated glass in clear anodized aluminum frames. Glass to be Sun Guard by Guardian Glass. Super Neutral 68 on Gray ("U" value=0.29, SHGC=0.25)
9. 2" solid cmu vap block
10. Pre-engineered insulated siding hangar doors
11. 26 ga trim cap at top of parapet
12. Vertical structural element break metal
13. Wall pack light fixture per electrical drawings



HANGAR 'B' - SOUTH ELEVATION

SCALE: 3/32" = 1'-0"



HANGAR 'B' - EAST ELEVATION

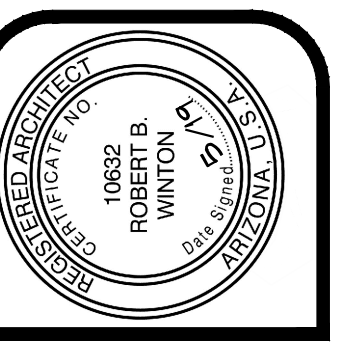
SCALE: 3/32" = 1'-0"

□ EXTERIOR PAINT COLORS- PMGA HANGARS

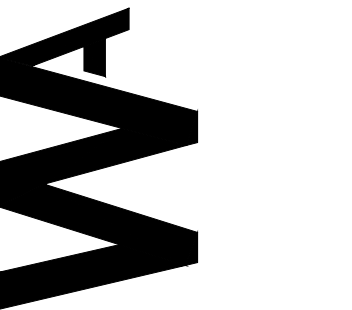
- A White, DEW 380
- B Winter Morn, DET 617
- C Foil, DE 6360
- D Surfs Up, DET 583

⬡ EXTERIOR ELEVATION KEYNOTES

1. Pre-engineered metal siding
2. 8" split faced cmu
3. 8" center scored cmu
4. Steel sectional insulated overhead door
5. Pre-engineered metal panel with score joints
6. Steel canopy per details
7. Hollow metal insulated door and frame
8. Fixed insulated glass in clear anodized aluminum frames, Glass to be Sun Guard by Guardian Glass, Super Neutral 68 on Gray ("U" value=0.29, SHGC=0.25)
9. 2" solid cmu vap block
10. Pre-engineered insulated siding hangar doors
11. 26 ga trim cap at top of parapet
12. Vertical structural element break metal
13. Wall pack light fixture per electrical drawings



winton architects, inc.
 1110 E. Missouri Ave., Suite 800, Phoenix, Arizona 85014
 (602) 230-9778 FAX (602) 265-9739

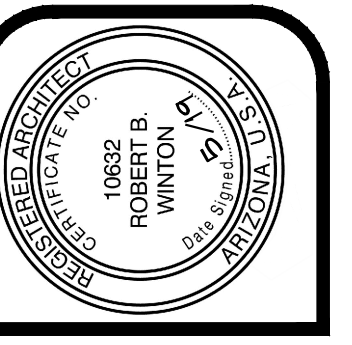


**NEW HANGAR 'B' for
 PMGA
 MESA, ARIZONA
 SUN STATE BUILDERS**

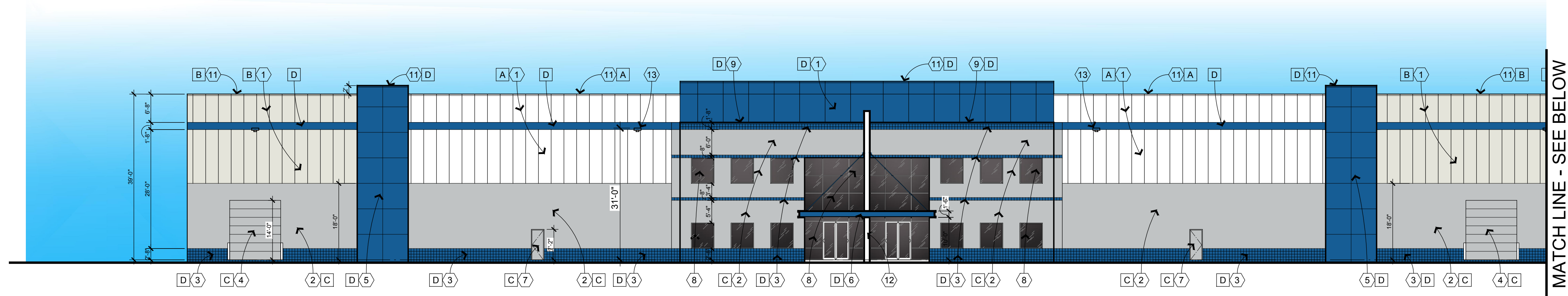
job no. 19116
 drawn MGO
 approved RBW
 date 5/09/19

revisions

A-4.1

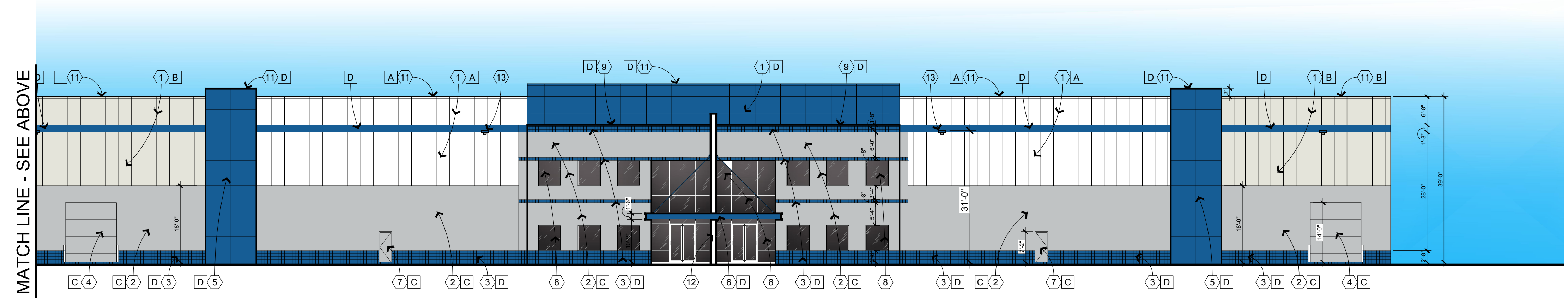


W winton architects, inc.
 1110 E. Missouri Ave., Suite 800, Phoenix, Arizona 85014
 (602) 230-9778 FAX (602) 265-9739



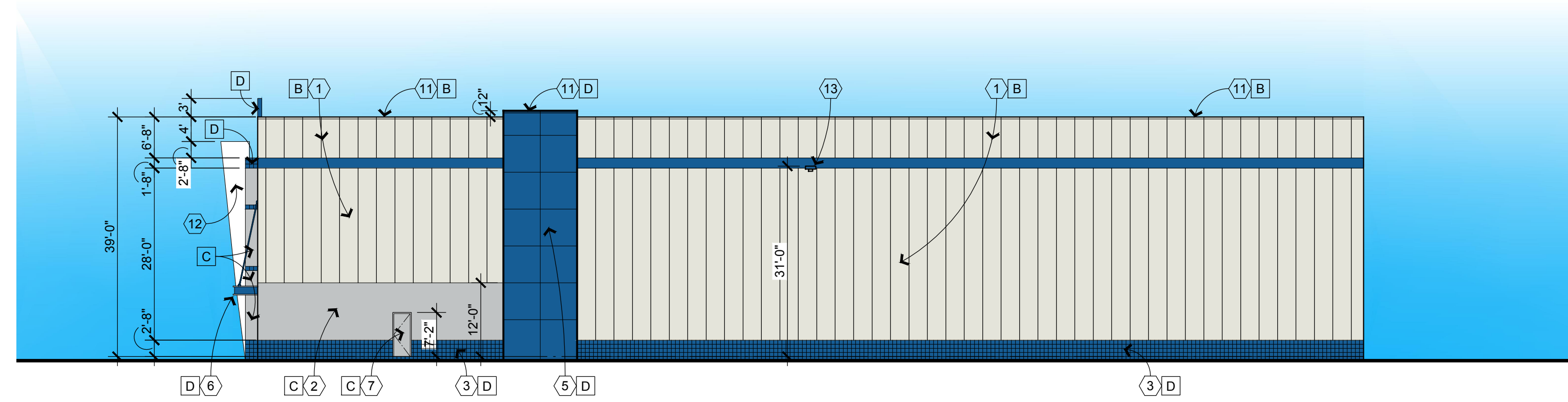
HANGAR 'C' - NORTH ELEVATION EAST END

SCALE: 1/16" = 1'-0"



HANGAR 'C' - NORTH ELEVATION WEST END

SCALE: 1/16" = 1'-0"



HANGAR 'C' - WEST ELEVATION

SCALE: 1/16" = 1'-0"

EXTERIOR PAINT COLORS- PMGA HANGARS

- A White, DEW 380
- B Winter Morn, DET 617
- C Foil, DE 6360
- D Surfs Up, DET 583

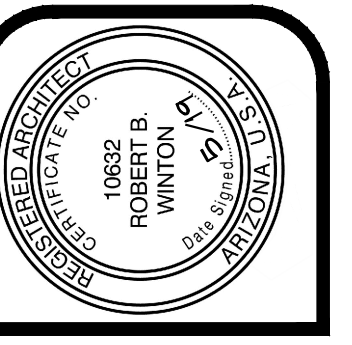
EXTERIOR ELEVATION KEYNOTES

1. Pre-engineered metal siding
2. 8" split faced cmu
3. 8" center scored cmu
4. Steel sectional insulated overhead door
5. Pre-engineered metal panel with score joints
6. Steel canopy per details
7. Hollow metal insulated door and frame
8. Fixed insulated glass in clear anodized aluminum frames. Glass to be Sun Guard by Guardian Glass, Super Neutral 68 on Gray ("U" value=0.29, SHGC=0.25)
9. 2" solid cmu vap block
10. Pre-engineered insulated siding hangar doors
11. 26 ga trim cap at top of parapet
12. Vertical structural element break metal
13. Wall pack light fixture per electrical drawings

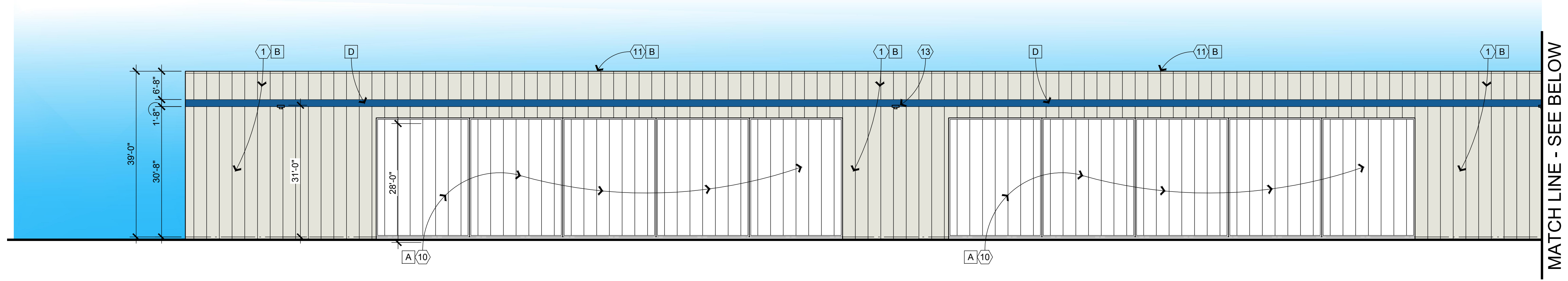
NEW HANGAR 'C' for
PMGA
MESA, ARIZONA
SUN STATE BUILDERS

job no. 19116
 drawn MGO
 approved RBW
 date 5/09/19

revisions

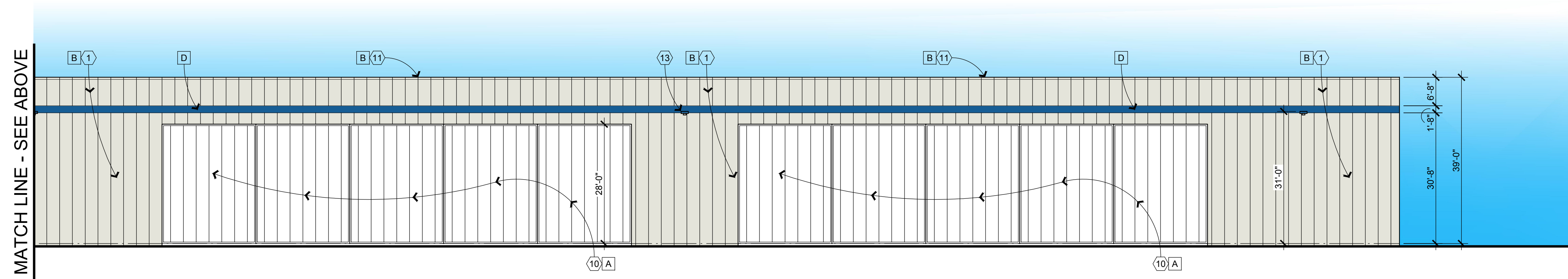


W winton architects, inc.
 1110 E. Missouri Ave., Suite 800, Phoenix, Arizona 85014
 (602) 230-9778 FAX (602) 265-9739



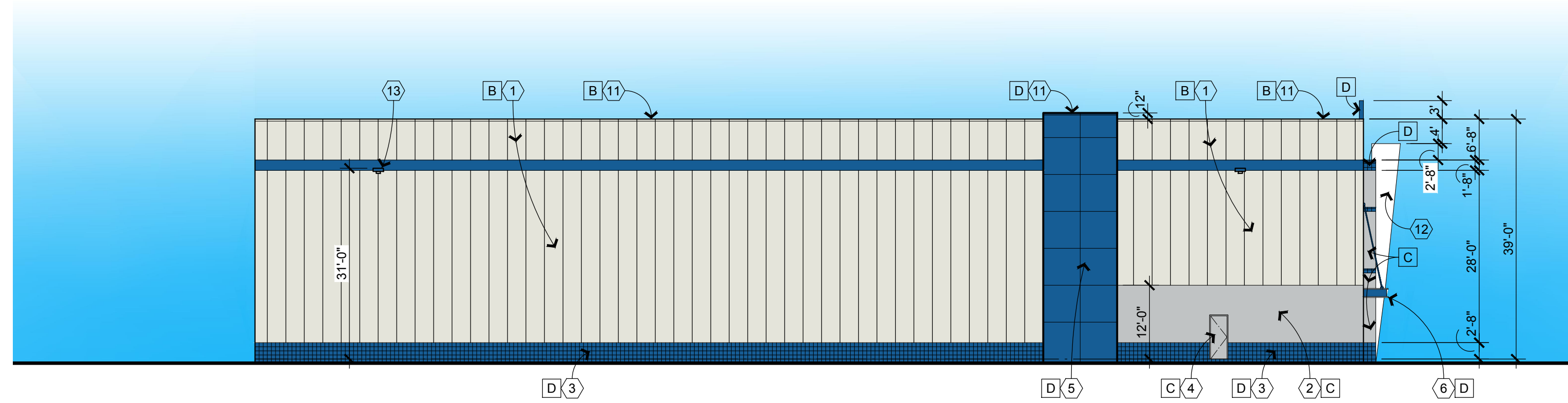
HANGAR 'C' - SOUTH ELEVATION WEST END

SCALE: 1/16" = 1'-0"



HANGAR 'C' - SOUTH ELEVATION EAST END

SCALE: 1/16" = 1'-0"



HANGAR 'C' - EAST ELEVATION

SCALE: 1/16" = 1'-0"

- EXTERIOR PAINT COLORS- PMGA HANGARS
- A White, DEW 380
 - B Winter Morn, DET 617
 - C Foil, DE 6360
 - D Surfs Up, DET 583

- ◊ EXTERIOR ELEVATION KEYNOTES
1. Pre-engineered metal siding
 2. 8" split faced cmu
 3. 8" center scored cmu
 4. Steel sectional insulated overhead door
 5. Pre-engineered metal panel with score joints
 6. Steel canopy per details
 7. Hollow metal insulated door and frame
 8. Fixed insulated glass in clear anodized aluminum frames. Glass to be Sun Guard by Guardian Glass, Super Neutral 68 on Gray (U value=0.29, SHGC=0.25)
 9. 2" solid cmu vap block
 10. Pre-engineered insulated siding hangar doors
 11. 26 ga trim cap at top of parapet
 12. Vertical structural element break metal
 13. Wall pack light fixture per electrical drawings

NEW HANGAR 'C' for
PMGA
 MESA, ARIZONA
 SUN STATE BUILDERS

job no. 19116
 drawn MGO
 approved RBW
 date 5/09/19

revisions

EXTERIOR PAINT COLORS- PMGA HANGARS

A. White, DEW 380



B. Winter Morn, DET 617



C. Foil, DE 6360



D. Surfs Up, DET 583

